



Disclaimer: We accept all risks and responsibility for losses, damages, costs and other consequences resulting directly or indirectly from using this plan and any information or material available from it. To the maximum permitted by law, Gippsland Ports excludes all liability to any person arising directly or indirectly from using this plan and any information or material available from it.


Amendment List			Equipment	Reliability	Datum Diagram	Scale 1:2,500 @ A1 0 50 100 200 300 metres	Surveyed by			Gippsland Lakes	
Date	Rev.	Description	CeeEcho 200kHz 9 degree beam survey system with Trimble RTK-GNSS	Depth Accuracy - ZOC A1 Position Accuracy - ZOC A1 Full bottom search not completed	Notations Datum for soundings is Australian Height Datum (A.H.D). Co-ordinate system is GDA2020 (Red) and MGA2020, Zone 55 (Grey). Horizontal and Vertical positioning derived using GNSS. Contours are at 1m intervals. All values are in metres. Negative depths indicate drying heights.		Date of Survey			Latrobe River	
							Previous Plan Numbers		Compiled by	Ch. 2250 to 4300	
				5556		Checked by					
						Date Checked					



Disclaimer: You accept all risks and responsibility for losses, damages, costs and other consequences resulting directly or indirectly from using this plan and any information or material available from it. To the maximum permitted by law, Gippsland Ports excludes all liability to any person arising directly or indirectly from using this plan and any information or material available from it.

Amendment List			Equipment	Reliability	Datum Diagram	Scale 1:2,500 @ A1		Surveyed by	GIPPSLAND PORTS		Gippsland Lakes	
Date	Rev.	Description	CeeEcho 200kHz 9 degree beam survey system with Trimble RTK-GNSS	Depth Accuracy - ZOC A1 Position Accuracy - ZOC A1 Full bottom search not completed		0 50 100 200 300 metres		Date of Survey	S. Harman & B. Spafford		6982 Latrobe River Ch. 4100 to 6200	
						Notations	Date Checked	Sheet 2 of 11				
						Datum for soundings is Australian Height Datum (A.H.D). Co-ordinate system is GDA2020 (Red) and MGA2020, Zone 55 (Grey). Horizontal and Vertical positioning derived using GNSS. Contours are at 1m intervals. All values are in metres. Negative depths indicate drying heights.	03/06/2026					

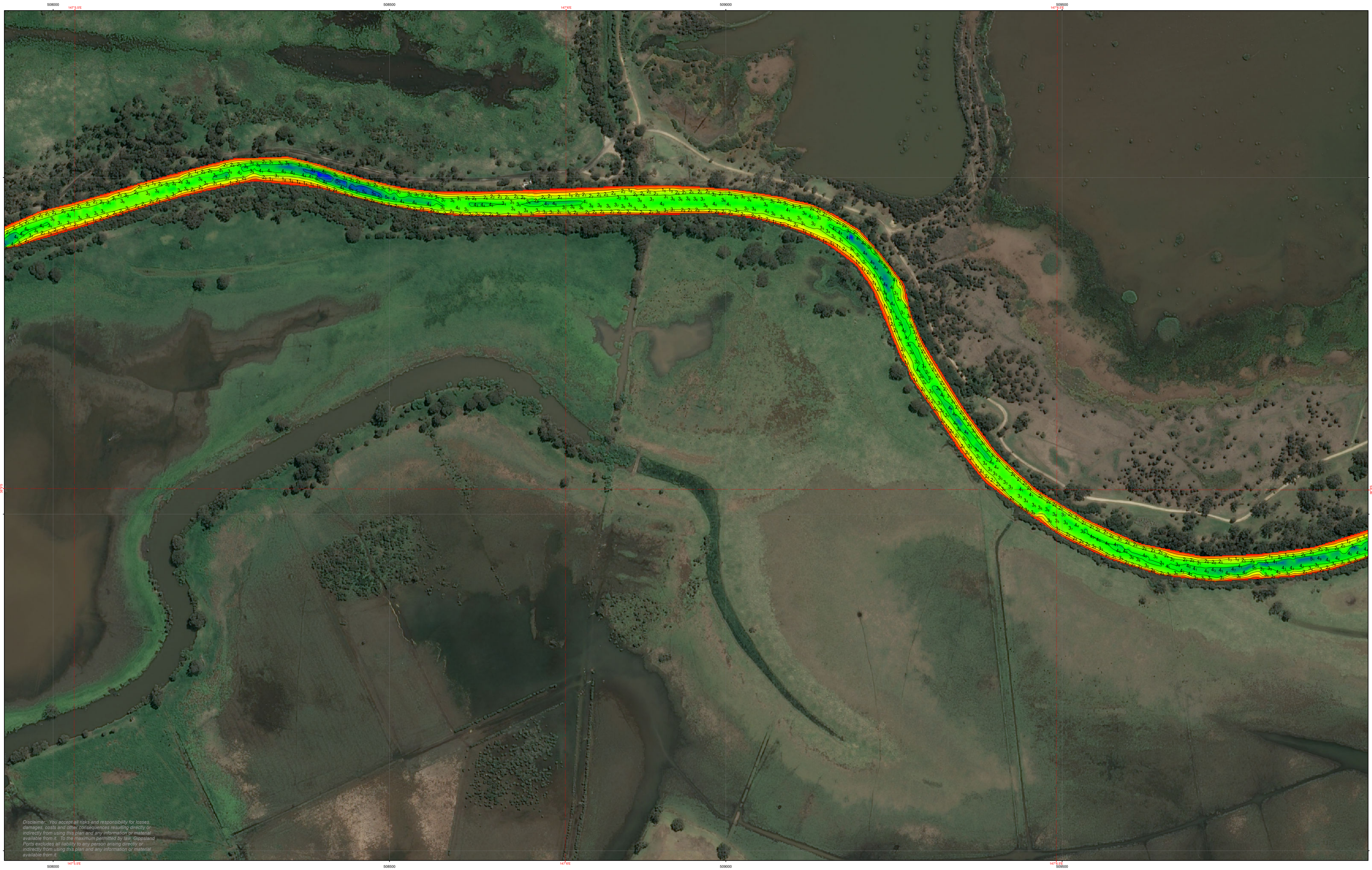


Amendment List			Equipment	Reliability	Datum Diagram	Scale 1:2,500 @ A1 0 50 100 200 300 metres	Surveyed by	GIPPSLAND PORTS		Gippsland Lakes	
Date	Rev.	Description	CeeEcho 200kHz 9 degree beam survey system with Trimble RTK-GNSS	Depth Accuracy - ZOC A1 Position Accuracy - ZOC A1 Full bottom search not completed			Notations Datum for soundings is Australian Height Datum (A.H.D). Co-ordinate system is GDA2020 (Red) and MGA2020, Zone 55 (Grey). Horizontal and Vertical positioning derived using GNSS. Contours are at 1m intervals. All values are in metres. Negative depths indicate drying heights.	Date of Survey		Latrobe River	
				Previous Plan Numbers		Compiled by		Ch. 7500 to 9550		Sheet 4 of 11	Sheet Size A1
				5556			Checked by				
							Date Checked				



Disclaimer: You accept all risks and responsibility for losses, damages, costs and other consequences resulting directly or indirectly from using this plan and any information or material available from it. To the maximum permitted by law, Gippsland Ports excludes all liability to any person arising directly or indirectly from using this plan and any information or material available from it.

Amendment List			Equipment	Reliability	Datum Diagram	Scale 1:2,500 @ A1 	Surveyed by			Gippsland Lakes Latrobe River Ch. 9350 to 11500		6982	
Date	Rev.	Description	CeeEcho 200kHz 9 degree beam survey system with Trimble RTK-GNSS	Depth Accuracy - ZOC A1 Position Accuracy - ZOC A1 Full bottom search not completed Previous Plan Numbers 5556	Notations Datum for soundings is Australian Height Datum (A.H.D). Co-ordinate system is GDA2020 (Red) and MGA2020, Zone 55 (Grey). Horizontal and Vertical positioning derived using GNSS. Contours are at 1m intervals. All values are in metres. Negative depths indicate drying heights.		Date of Survey					Compiled by	Checked by
										S. Harman & B. Spafford	27 & 29/05/2026	S. Harman	M.Spykers (BAppSc Surveying)



Disclaimer: You accept all risks and responsibility for losses, damages, costs and other consequences resulting directly or indirectly from using this plan and any information or material available from it. To the maximum permitted by law, Gippsland Ports excludes all liability to any person arising directly or indirectly from using this plan and any information or material available from it.

Amendment List			Equipment	Reliability	Datum Diagram
Date	Rev.	Description	CeeEcho 200kHz 9 degree beam survey system with Trimble RTK-GNSS	Depth Accuracy - ZOC A1 Position Accuracy - ZOC A1 Full bottom search not completed	
		Previous Plan Numbers			
		5556			

Scale 1:2,500 @ A1

Notations
 Datum for soundings is Australian Height Datum (A.H.D).
 Co-ordinate system is GDA2020 (Red) and MGA2020, Zone 55 (Grey).
 Horizontal and Vertical positioning derived using GNSS.
 Contours are at 1m intervals.
 All values are in metres. Negative depths indicate drying heights.


Surveyed by	S. Harman & B. Spafford
Date of Survey	27 & 29/05/2026
Compiled by	S. Harman
Checked by	M.Spykers (BAppSc Surveying)
Date Checked	03/06/2026

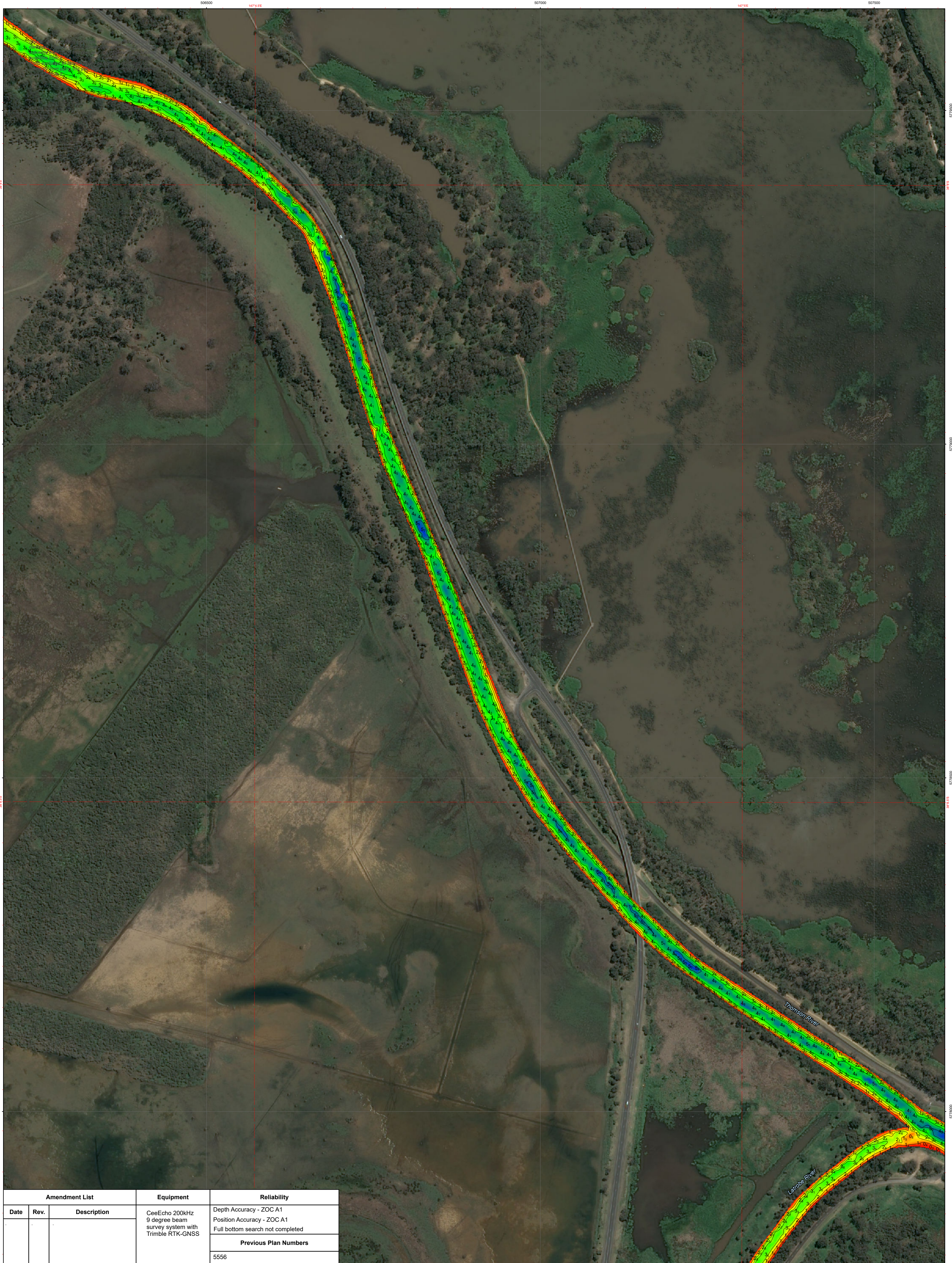


Gippsland Lakes	
Latrobe River	
Ch. 11350 to 13150	
6982	A1
Sheet 6 of 11	




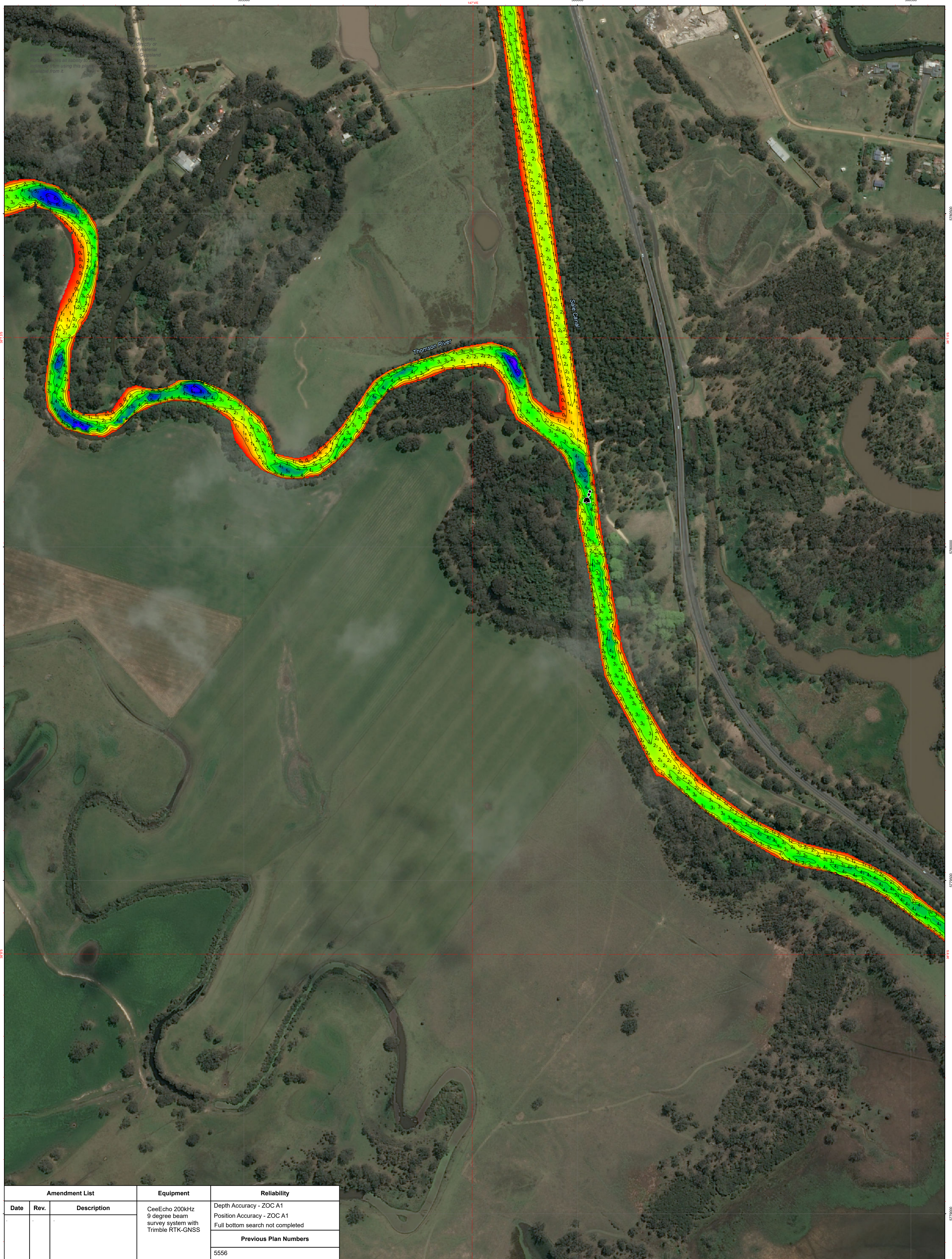
Disclaimer: You accept all risks and responsibility for losses, damages, costs and other consequences resulting directly or indirectly from using this plan and any information or material available from it. To the maximum permitted by law, Gippsland Ports excludes all liability to any person arising directly or indirectly from using this plan and any information or material available from it.

Amendment List			Equipment	Reliability	Datum Diagram	Scale 1:2,500 @ A1	Surveyed by	GIPPSLAND PORTS		Gippsland Lakes			
Date	Rev.	Description	CeeEcho 200kHz 9 degree beam survey system with Trimble RTK-GNSS	Depth Accuracy - ZOC A1 Position Accuracy - ZOC A1 Full bottom search not completed		0 50 100 200 300 metres	S. Harman & B. Spafford			Latrobe River Ch. 13050 to 15110		6982	
			Previous Plan Numbers	Notations	Datum for soundings is Australian Height Datum (A.H.D). Co-ordinate system is GDA2020 (Red) and MGA2020, Zone 55 (Grey). Horizontal and Vertical positioning derived using GNSS. Contours are at 1m intervals. All values are in metres. Negative depths indicate drying heights.	Date of Survey	27 & 29/05/2026					Sheet 7 of 11	Sheet Size
			5556			Compiled by	S. Harman						A1
						Checked by	M.Spykers (BAppSc Surveying)						
							Date Checked	03/06/2026					




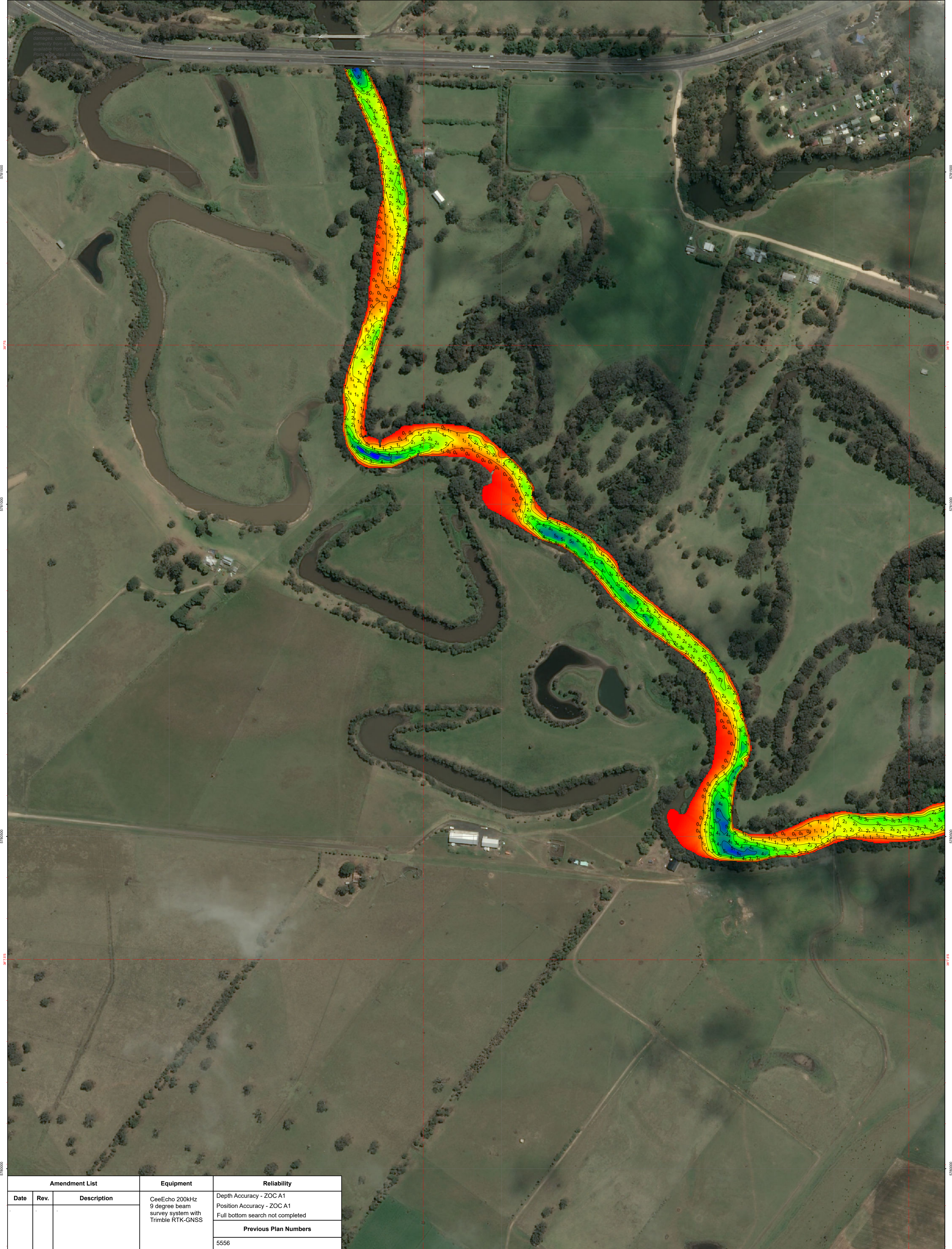
Amendment List		Equipment	Reliability
Date	Rev.	Description	
		CeeEcho 200kHz 9 degree beam survey system with Trimble RTK-GNSS	Depth Accuracy - ZOC A1 Position Accuracy - ZOC A1 Full bottom search not completed
			Previous Plan Numbers
			5556

Datum Diagram	Scale 1:2,500 @ A1	Surveyed by S. Harman & B. Spafford		<h2>Gippsland Lakes</h2>
	<p>Notations Datum for soundings is Australian Height Datum (A.H.D). Co-ordinate system is GDA2020 (Red) and MGA2020, Zone 55 (Grey). Horizontal and Vertical positioning derived using GNSS. Contours are at 1m intervals. All values are in metres. Negative depths indicate drying heights.</p>	<p>0 50 100 200 300 metres</p>		




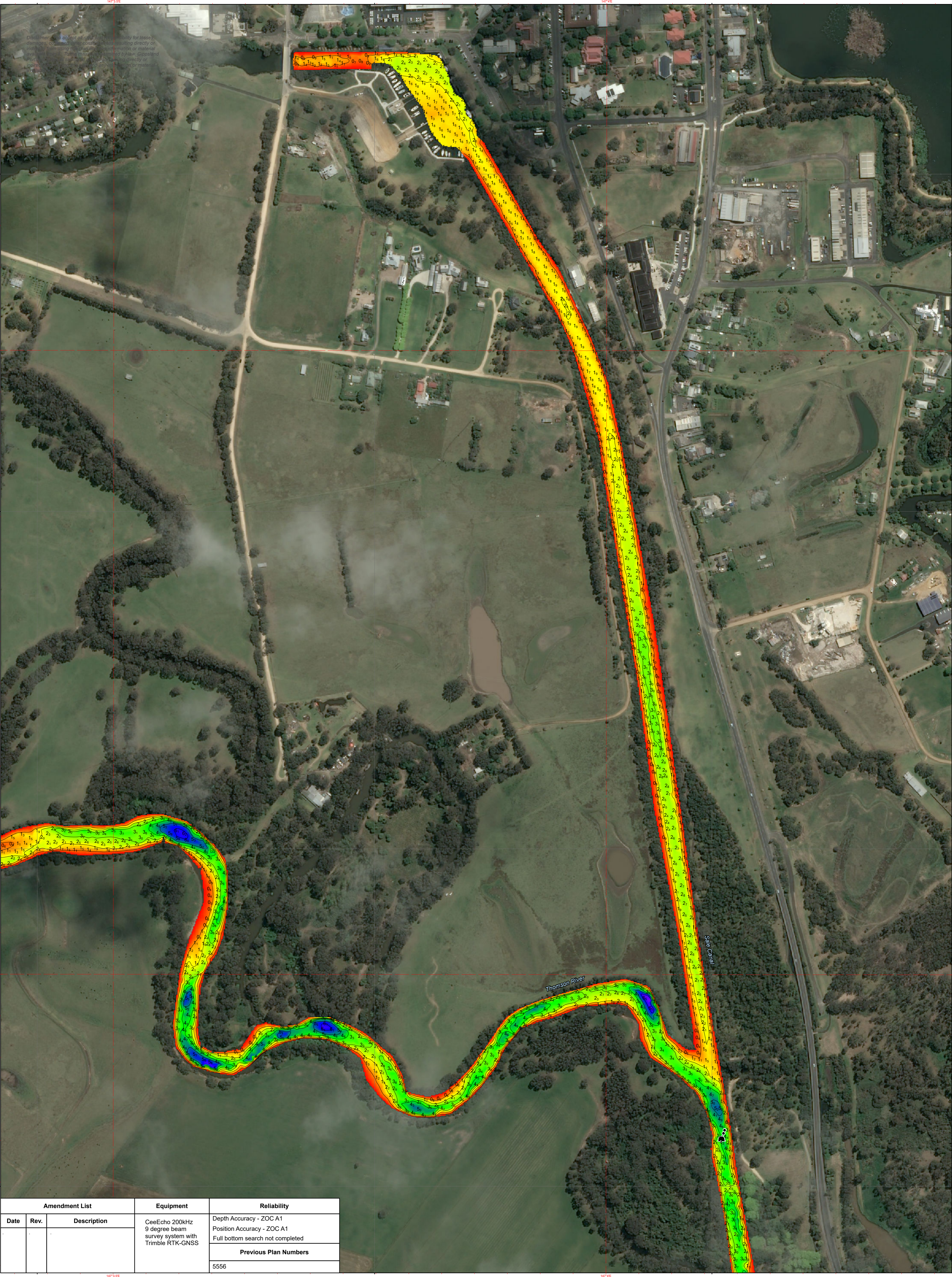
Amendment List		Equipment	Reliability
Date	Rev.	CeeEcho 200kHz 9 degree beam survey system with Trimble RTK-GNSS	Depth Accuracy - ZOC A1
			Position Accuracy - ZOC A1
			Full bottom search not completed
			Previous Plan Numbers
			5556

Datum Diagram	Scale 1:2,500 @ A1	Surveyed by	S. Harman & B. Spafford		Gippsland Lakes	
	0 50 100 200 300 metres	Date of Survey	27 & 29/05/2026			
Notations Datum for soundings is Australian Height Datum (A.H.D). Co-ordinate system is GDA2020 (Red) and MGA2020, Zone 55 (Grey). Horizontal and Vertical positioning derived using GNSS. Contours are at 1m intervals. All values are in metres. Negative depths indicate drying heights.	Compiled by	S. Harman	Ch. 1900 to 3500		Sheet 9 of 11	Sheet Size
	Date Checked	03/05/2026				A1




Amendment List		Equipment	Reliability
Date	Rev.	Description	Depth Accuracy - ZOC A1 Position Accuracy - ZOC A1 Full bottom search not completed
			Previous Plan Numbers
			5556

Datum Diagram	Scale 1:2,500 @ A1	Surveyed by	S. Harman & B. Spafford		Gippsland Lakes Thomson River Ch. 3200 to 4950	6982 Sheet 10 of 11	Sheet Size A1
	Notations Datum for soundings is Australian Height Datum (A.H.D). Co-ordinate system is GDA2020 (Red) and MGA2020, Zone 55 (Grey). Horizontal and Vertical positioning derived using GNSS. Contours are at 1m intervals. All values are in metres. Negative depths indicate drying heights.	Date of Survey 27 & 29/05/2026	Compiled by S. Harman				



Amendment List		Equipment	Reliability
Date	Rev.	Description	Depth Accuracy - ZOC A1 Position Accuracy - ZOC A1 Full bottom search not completed
			Previous Plan Numbers
			5556

Datum Diagram	Scale 1:2,500 @ A1	Surveyed by	S. Harman & B. Spafford		Gippsland Lakes Sale Canal & Port of Sale	6982 Sheet 11 of 11	A1
	Notations Datum for soundings is Australian Height Datum (A.H.D). Co-ordinate system is GDA2020 (Red) and MGA2020, Zone 55 (Grey). Horizontal and Vertical positioning derived using GNSS. Contours are at 1m intervals. All values are in metres. Negative depths indicate drying heights.	Date of Survey 27 & 29/05/2026 Compiled by S. Harman Checked by M. Spykens (BAppSc Surveying) Date Checked 03/05/2026	0 50 100 200 300 metres				