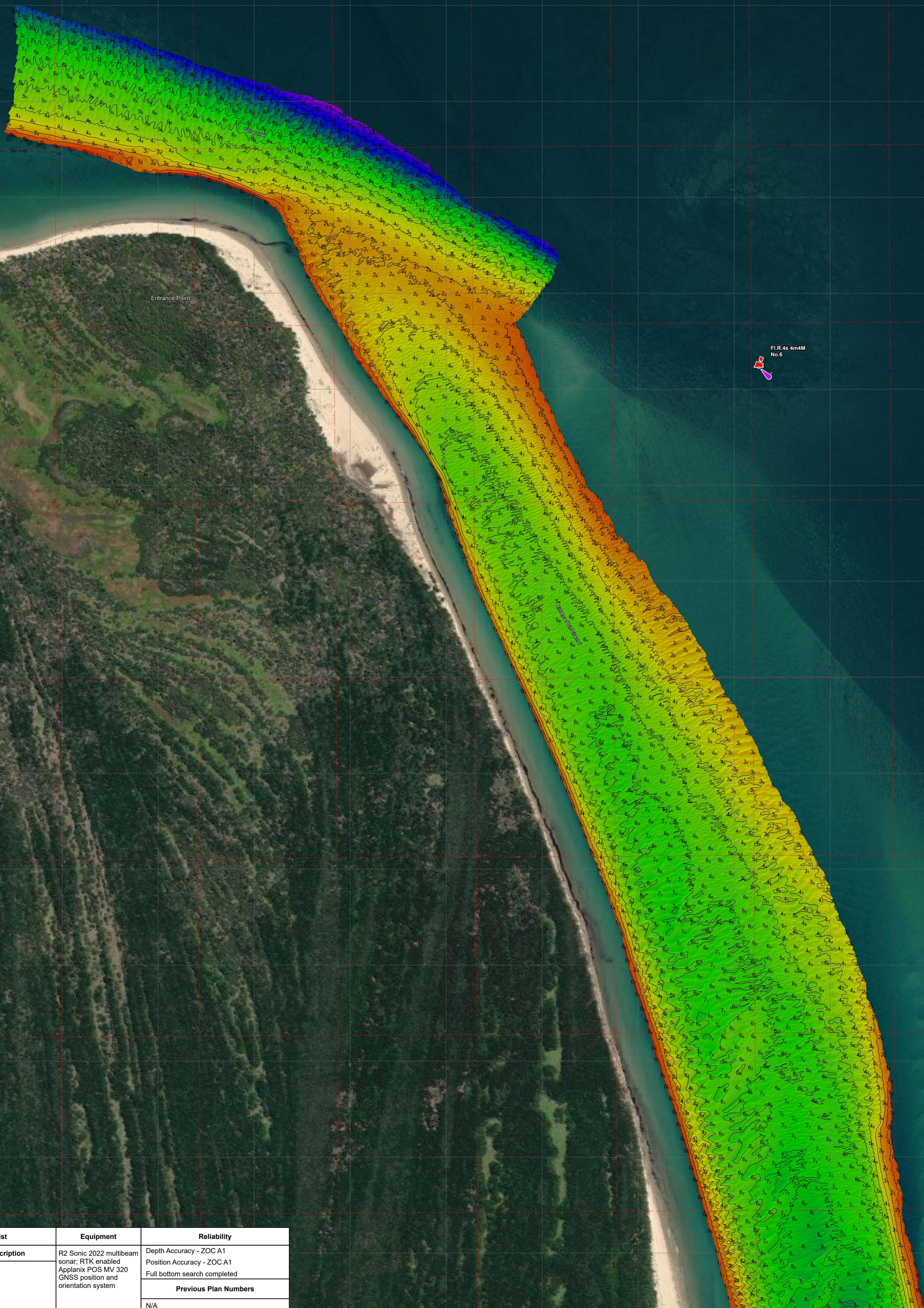


Disclaimer: You accept all risks and responsibility for losses, damages, costs and other consequences resulting directly or indirectly from using this plan and any information or material available from it. To the maximum permitted by law, Gippsland Ports excludes all liability to any person arising directly or indirectly from using this plan and any information or material available from it.



Entrance Point

Fl.R.4s 4m4M
No.6

Amendment List			Equipment	Reliability
Date	Rev.	Description	R2 Sonic 2022 multibeam sonar; RTK enabled Applix POS MV 320 GNSS position and orientation system	Depth Accuracy - ZOC A1 Position Accuracy - ZOC A1 Full bottom search completed
				Previous Plan Numbers
				N/A

Datum Diagram	
AHD (m)	Chart Datum (m)
2.002	-3.511
0.000	-1.509
-1.509	-0.000

Scale 1:4,000 @ A1

0 50 100 200 300 400 metres

Notations Datum for soundings is Chart Datum, which is 1.51 metres below A.H.D. Co-ordinate system is GDA2020 (Red) and MGA2020, Zone 55 (Grey). Horizontal and Vertical positioning derived using PPK-GNSS. Contours are at 1m intervals. All values are in metres. Negative depths indicate drying heights.

Surveyed by	B.Spafford (BTech)
Date of Survey	18-21/02/2025
Compiled by	B.Spafford (BTech)
Checked by	M.Spykers (BAppSc Surveying)
Date Checked	22/03/2025

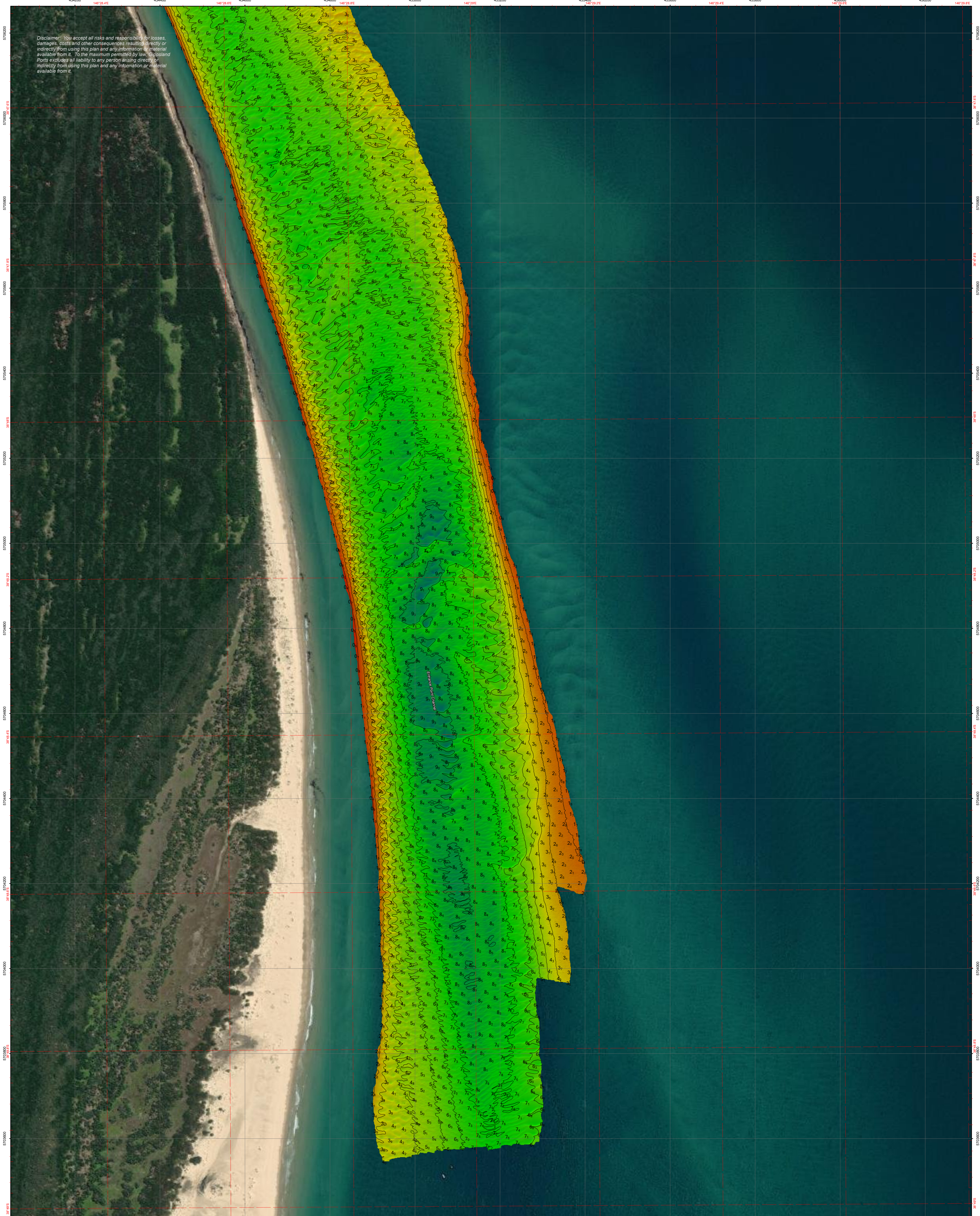


Corner Inlet & Port Albert

Vicinity of Corner Inlet Entrance
Entrance Point Channel

6866

Sheet 1 of 2 **A1**



Amendment List			Equipment	Reliability
Date	Rev.	Description	R2 Sonic 2022 multibeam sonar; RTK enabled Applanix POS MV 320 GNSS position and orientation system	Depth Accuracy - ZOC A1 Position Accuracy - ZOC A1 Full bottom search completed
				Previous Plan Numbers
				N/A

Datum Diagram	
AHD (m)	Chart Datum (m)
2.002	-3.511
0.000	-1.509
-1.509	-0.000

Scale 1:4,000 @ A1

0 50 100 200 300 400 metres

Notations Datum for soundings is Chart Datum, which is 1.51 metres below A.H.D. Co-ordinate system is GDA2020 (Red) and MGA2020, Zone 55 (Grey). Horizontal and Vertical positioning derived using PPK-GNSS. Contours are at 1m intervals. All values are in metres. Negative depths indicate drying heights.

Surveyed by	B. Spafford (BTech)
Date of Survey	18-21/02/2025
Compiled by	B. Spafford (BTech)
Checked by	M. Spykers (BAppSc Surveying)
Date Checked	22/03/2025



Corner Inlet & Port Albert

Vicinity of Corner Inlet Entrance
Entrance Point Channel

6866

Sheet 2 of 2 **A1**