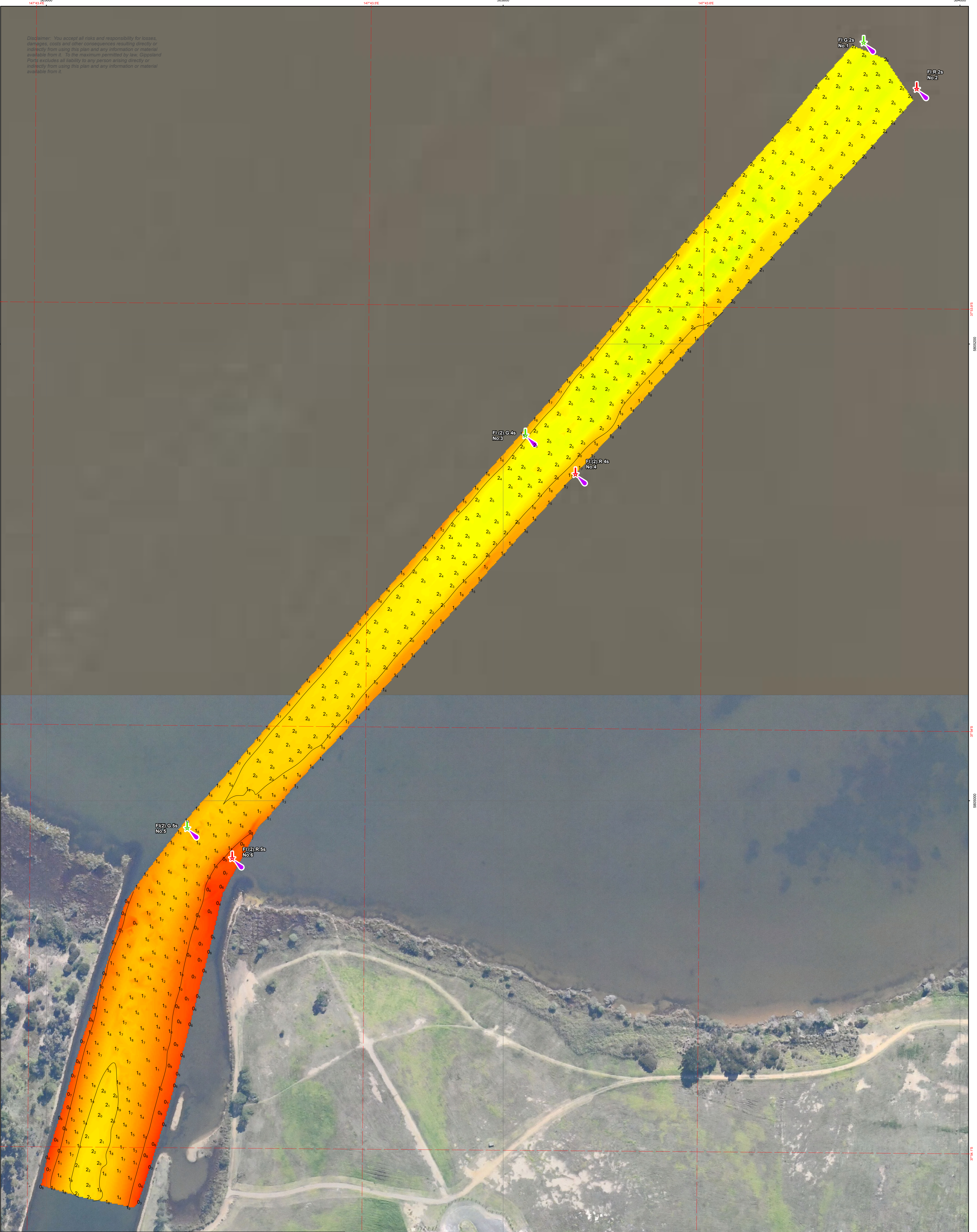


Disclaimer: You accept all risks and responsibility for losses, damages, costs and other consequences resulting directly or indirectly from using this plan and any information or material available from it. To the maximum permitted by law, Gippsland Ports excludes all liability to any person arising directly or indirectly from using this plan and any information or material available from it.



Amendment List			Equipment	Reliability
Date	Rev.	Description	CesEcho 200kHz 9 degree beam survey system with Trimble RTK-GNSS	Depth Accuracy - ZOC A1 Position Accuracy - ZOC A1 Full bottom not completed
				Previous Plan Numbers
				6548

Datum Diagram	
---------------	--

Scale 1:750 @ A1

Notations
Datum for soundings is Australian Height Datum A.H.D.
Co-ordinate system is GDA2020 (Red) and MGA2020, Zone 55 (Grey).
Horizontal and Vertical positioning derived using RTK-GNSS.
Contours are at 1m intervals.
All values are in metres. Negative depths indicate drying heights.

Surveyed by	M.Spykers & S.Harman
Date of Survey	16/01/2025
Compiled by	M.Spykers (BAppSc Surveying)
Checked by	S.Harman
Date Checked	16/01/2025



Gippsland Lakes	
Paynesville Canals Northern Approach	
6856	Sheet Size A1
Sheet 1 of 1	