

NOTICE TO MARINERS



GIPPSLAND PORTS

The following navigation warning is published for general information

AUSTRALIA - VICTORIA

No. 330 OF 2024

PORT OF GIPPSLAND LAKES

LAKES ENTRANCE

CUNNINGHAME ARM NO. 1 LATERAL MARK BUOY ESTABLISHED

DATE: 6th August 2024

PREVIOUS NOTICE: No Previous Notice Issued.

DETAILS: Mariners are advised that shoaling has occurred between the Cunninghame Arm Starboard Entrance Light Jetty and the Flagstaff Jetty in the vicinity of the entrance to Cunninghame Arm.

Gippsland Ports has established a Starboard Lateral Mark Buoy; Cunninghame Arm No.1 (Fl.G.4s) in Position,
Lat. 37°53.211 S
Lon. 147° 58.336' E
See attached Bathymetric Survey for reference.

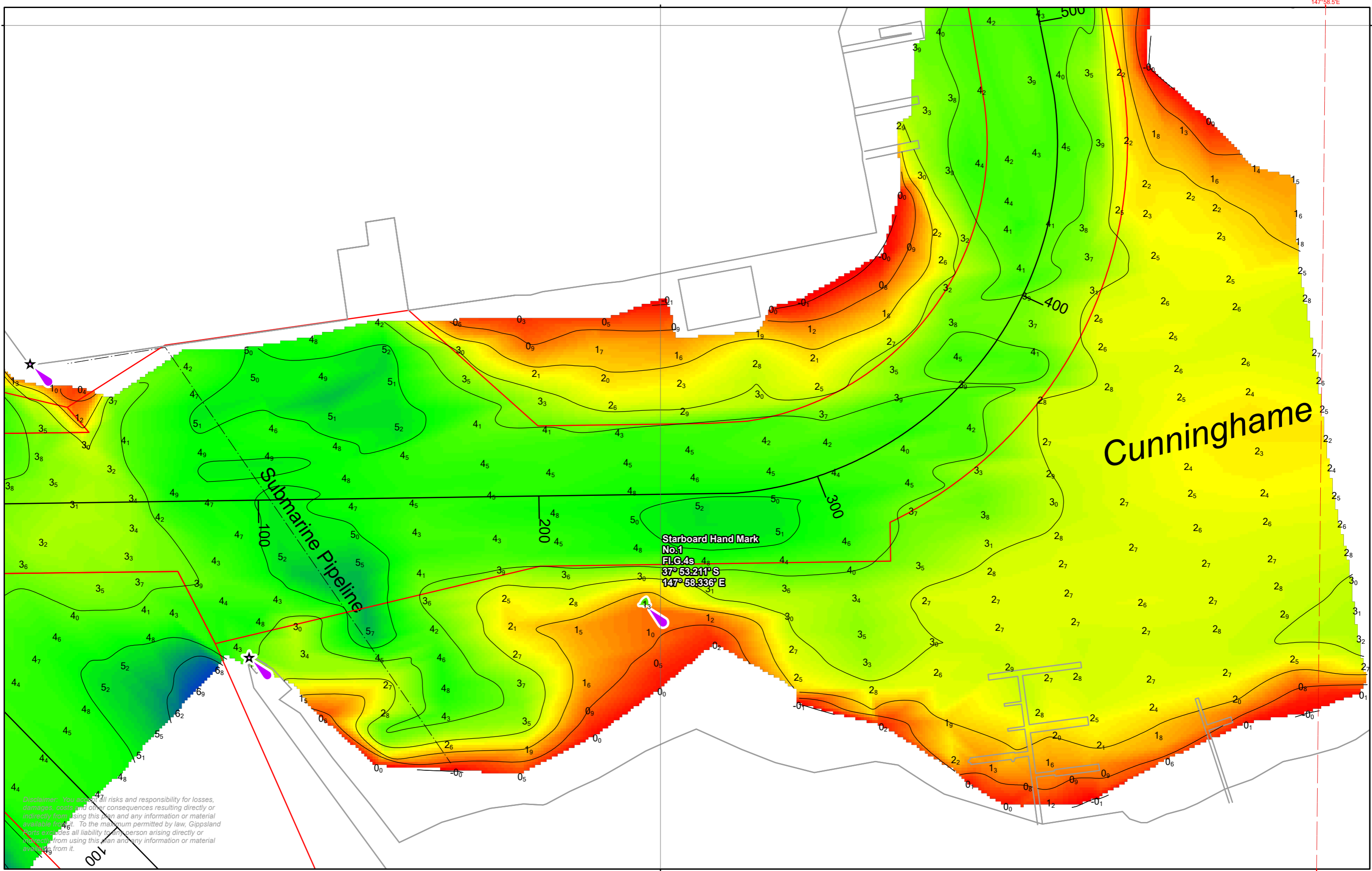
For further information please call Gippsland Ports Harbour Master on 0427 610 025

CHARTS AFFECTED: ENC Cell AUSLEN01

PUBLICATIONS AFFECTED: Gippsland Ports Waterways online website available at;
<https://www.gippslandports.vic.gov.au/boating/waterways-online/>

FURTHER NOTICE: No further Notice will be issued.

**CAPT. BEVIS HAYWARD
HARBOUR MASTER
GIPPSLAND PORTS**



Disclaimer: You accept all risks and responsibility for losses, damages, costs and other consequences resulting directly or indirectly from using this plan and any information or material available from it. To the maximum permitted by law, Gippsland Ports excludes all liability to any person arising directly or indirectly from using this plan and any information or material available from it.

Lakes Entrance Inner - Cunninghame Arm
Starboard Lateral Buoy No.1

Prepared :- B.Spafford
 Date :- 15/07/2024

