

NOTICE TO MARINERS

GIPPSLAND PORTS



The following navigation warning is published for general information

AUSTRALIA - VICTORIA

No.329 OF 2024

PORT OF GIPPSLAND LAKES

LAKES ENTRANCE BAR

NAVIGATION WARNING

BAR DEPTHS COMPROMISED

FOLLOWING TASMAN SEA WEATHER EVENT

DATE: 5th August 2024

PREVIOUS NOTICE: Notice to Mariners No.358 of 2022 is referred and cancelled.

DETAILS: Mariners are advised that following the recent Tasman Sea weather event causing high density swells, environmental conditions on the bar had caused the TSHD Tommy Norton to abort dredging operations temporarily.

A preliminary survey conducted this morning indicates that depths on the centerline and to the East of the centerline of the Lakes Entrance leads have been compromised by the migration of sand from East to West. The migration has seen depths that were previously 4.5m LAT have reduced to 3.3m LAT today on the “**Green Light**” leading line shoaling further towards the East of the “**Green Light**” to less than 2.0m LAT. The shoaling covers an area from approximately 200m – 300m SE of the Eastern Pier. Depths beyond the shoaling increase to greater than 4.0m.

The survey indicates the deepest available water to transit the Lakes Entrance Bar to the Entrance Channel is now aligned on Line 4 – See the attached bathymetric survey with the (blue) leading line changed to line 4.

The Lakes Entrance Approach leading “**lights in line**” have been changed to Line 4 bearing 354°(T) to the Flagstaff.

Further surveys will be conducted to monitor any changes. Dredging operations with the “**TSHD Tommy Norton**” have resumed.

NOTICE TO MARINERS

GIPPSLAND PORTS



In the meantime, Mariners are advised to take extra precaution when crossing the Bar at Lakes Entrance, noting that the best time to cross the bar is during daylight hours at slack water in the entrance channel following high water.

For further information please call Gippsland Ports Harbour Master on 0427 610 025

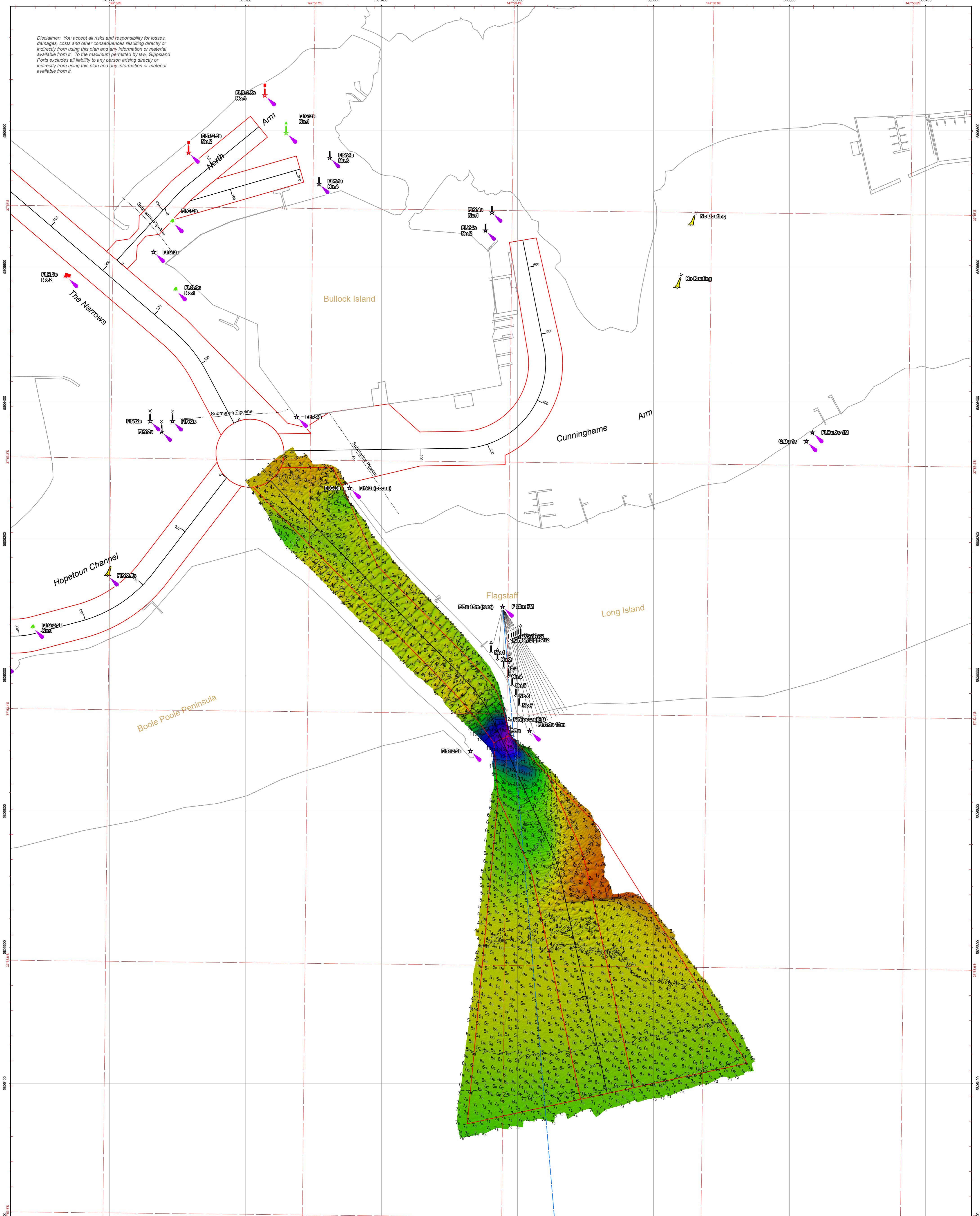
CHARTS ENC Cell AUSLEN01
AFFECTED:

PUBLICATIONS Gippsland Ports Waterways online website available at;
AFFECTED: <https://www.gippslandports.vic.gov.au/boating/waterways-online/>

FURTHER A further notice will be issued.
NOTICE:

CAPT. BEVIS HAYWARD
HARBOUR MASTER
GIPPSLAND PORTS

Disclaimer: You accept all risks and responsibility for losses, damages, costs and other consequences resulting directly or indirectly from using this plan and any information or material available from it. To the maximum permitted by law, Gippsland Ports excludes all liability to any person arising directly or indirectly from using this plan and any information or material available from it.



Amendment List			Equipment	Reliability
Date	Rev.	Description	R2 Sonic 2022 multibeam sonar; RTK enabled Applanix POS MV 320 GNSS position and orientation system	Depth Accuracy - ZOC A1 Position Accuracy - ZOC A1 Full bottom search completed
			Previous Plan Numbers	
			6802	

Datum Diagram	
AHD (m)	Chart Datum (m)
10.610	11.367
0.000	0.757
-0.757	-0.000

Scale 1:2,500 @ A1

0 50 100 200 300 metres

Notations Datum for soundings is Chart Datum, which is 0.757 metres below A.H.D. Co-ordinate system is GDA2020 (Red) and MGA2020, Zone 55 (Grey). Horizontal and Vertical positioning derived using RTK-GNSS. Contours are at 1m intervals. All values are in metres. Negative depths indicate drying heights.

Surveyed by	M.Spykers (BAppSc Surveying)
Date of Survey	5/08/2024
Compiled by	M.Spykers (BAppSc Surveying)
Checked by	S.Harman
Date Checked	5/08/2024



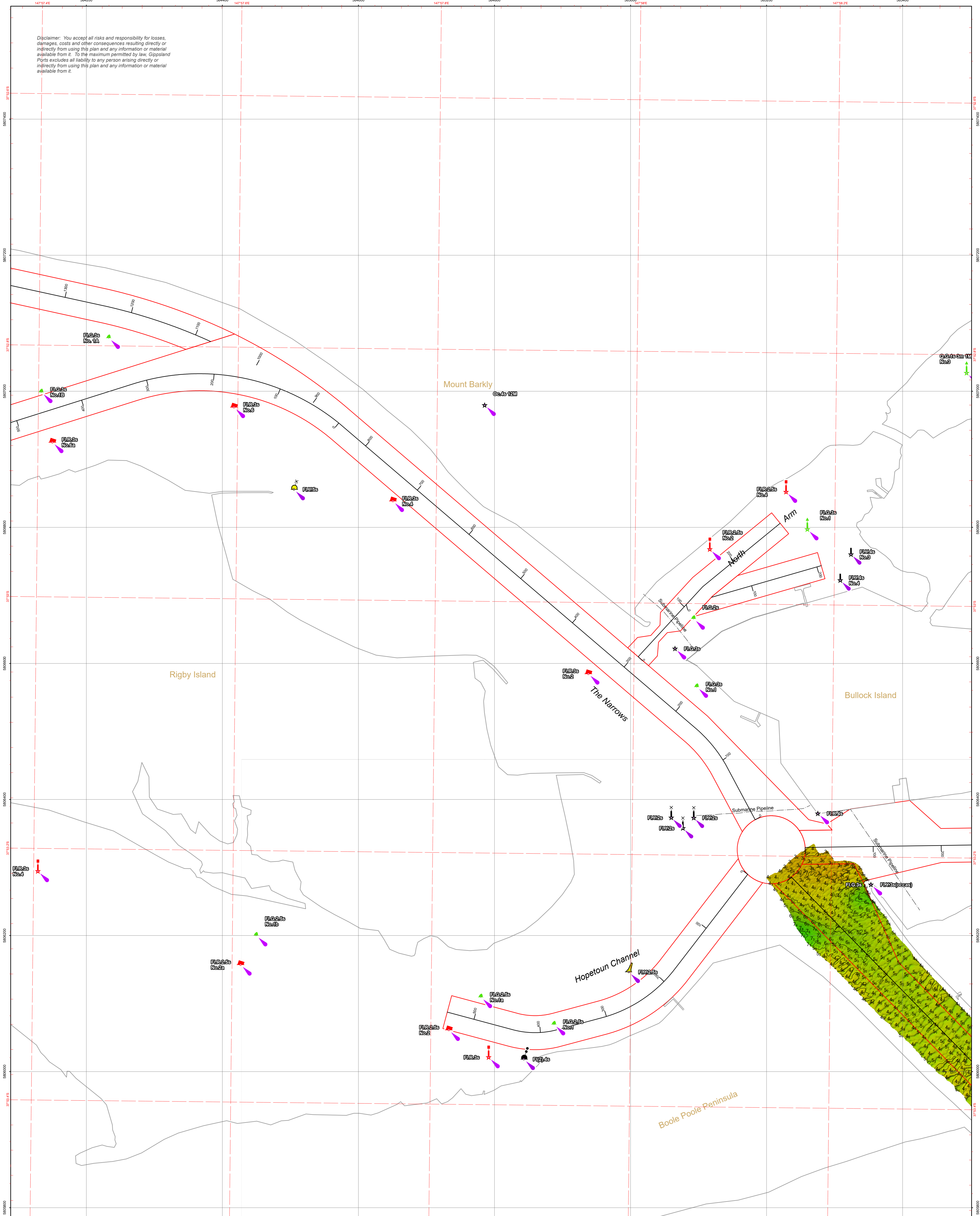
Gippsland Lakes

Lakes Entrance
Vicinity of The Entrance

6810

Sheet 1 of 1 **A1**

Disclaimer: You accept all risks and responsibility for losses, damages, costs and other consequences resulting directly or indirectly from using this plan and any information or material available from it. To the maximum permitted by law, Gippsland Ports excludes all liability to any person arising directly or indirectly from using this plan and any information or material available from it.



Amendment List			Equipment	Reliability
Date	Rev.	Description	R2 Sonic 2022 multibeam sonar; RTK enabled Applanix POS MV 320 GNSS position and orientation system	Depth Accuracy - ZOC A1 Position Accuracy - ZOC A1 Full bottom search completed
			Previous Plan Numbers	
			6802	

Datum Diagram	
AHD (m)	Chart Datum (m)
10.610	11.367
0.000	0.757
-0.757	0.000

Scale 1:2,500 @ A1

0 50 100 200 300 metres

Notations Datum for soundings is Chart Datum, which is 0.757 metres below A.H.D. Co-ordinate system is GDA2020 (Red) and MGA2020, Zone 55 (Grey). Horizontal and Vertical positioning derived using RTK-GNSS. Contours are at 1m intervals. All values are in metres. Negative depths indicate drying heights.

Surveyed by	M.Spykers (BAppSc Surveying)
Date of Survey	5/08/2024
Compiled by	M.Spykers (BAppSc Surveying)
Checked by	S.Harman
Date Checked	5/08/2024



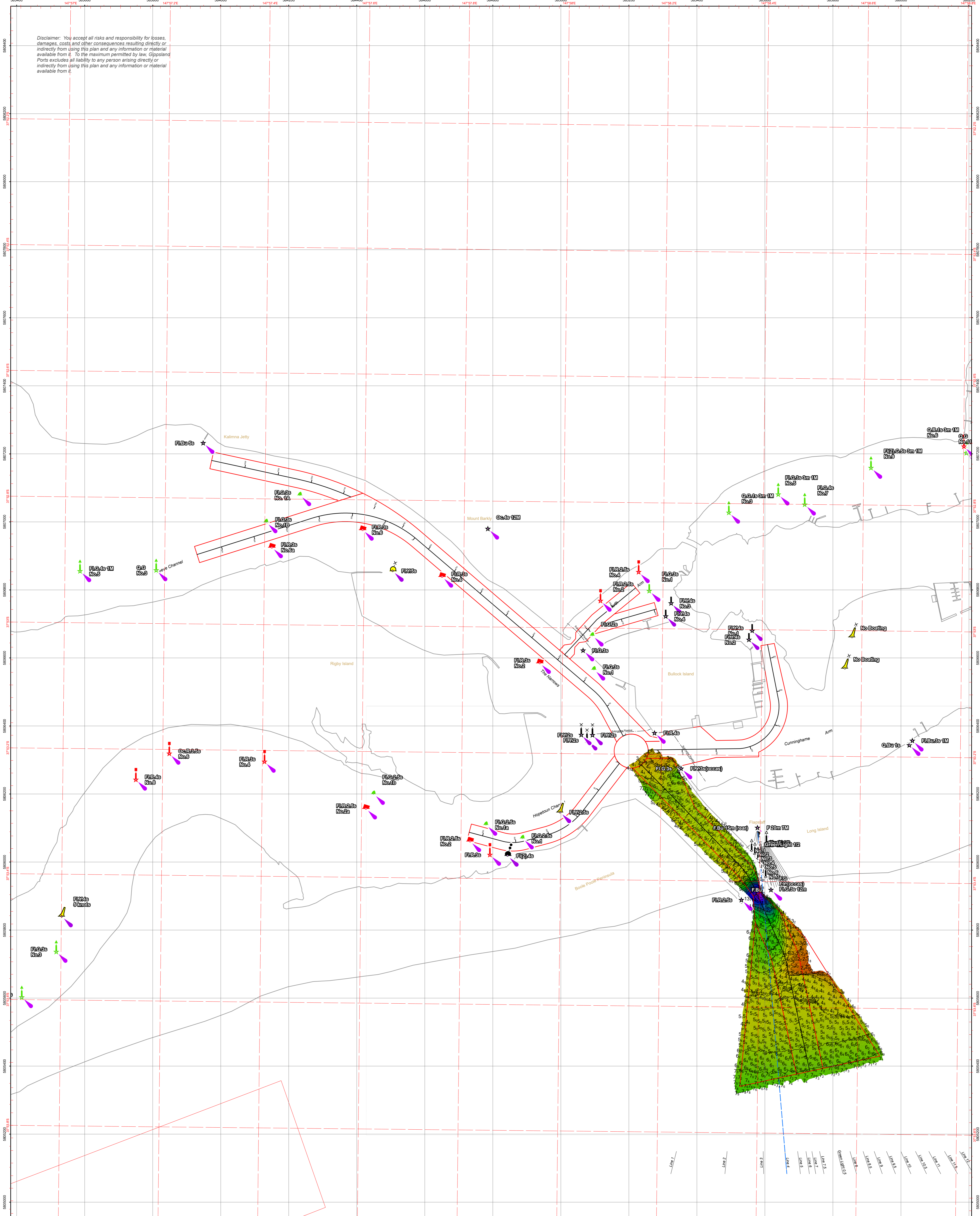
Gippsland Lakes

Lakes Entrance
Vicinity of The Entrance

6810

Sheet 1 of 1 **A1**

Disclaimer: You accept all risks and responsibility for losses, damages, costs and other consequences resulting directly or indirectly from using this plan and any information or material available from it. To the maximum permitted by law, Gippsland Ports excludes all liability to any person arising directly or indirectly from using this plan and any information or material available from it.



Amendment List			Equipment	Reliability
Date	Rev.	Description	R2 Sonic 2022 multibeam sonar; RTK enabled Applanix POS MV 320 GNSS position and orientation system	Depth Accuracy - ZOC A1 Position Accuracy - ZOC A1 Full bottom search completed
			Previous Plan Numbers	
			6802	

Datum Diagram	
AHD (m)	Chart Datum (m)
10.610	11.367
0.000	0.757
-0.757	0.000

Scale 1:5,000 @ A1

0 50 100 200 300 400 500 600 metres

Notations Datum for soundings is Chart Datum, which is 0.757 metres below A.H.D. Co-ordinate system is GDA2020 (Red) and MGA2020, Zone 55 (Grey). Horizontal and Vertical positions derived using RTK-GNSS. Contours are at 1m intervals. All values are in metres. Negative depths indicate drying heights.

Surveyed by	M.Spykers (BAppSc Surveying)
Date of Survey	5/08/2024
Compiled by	M.Spykers (BAppSc Surveying)
Checked by	S.Harman
Date Checked	5/08/2024



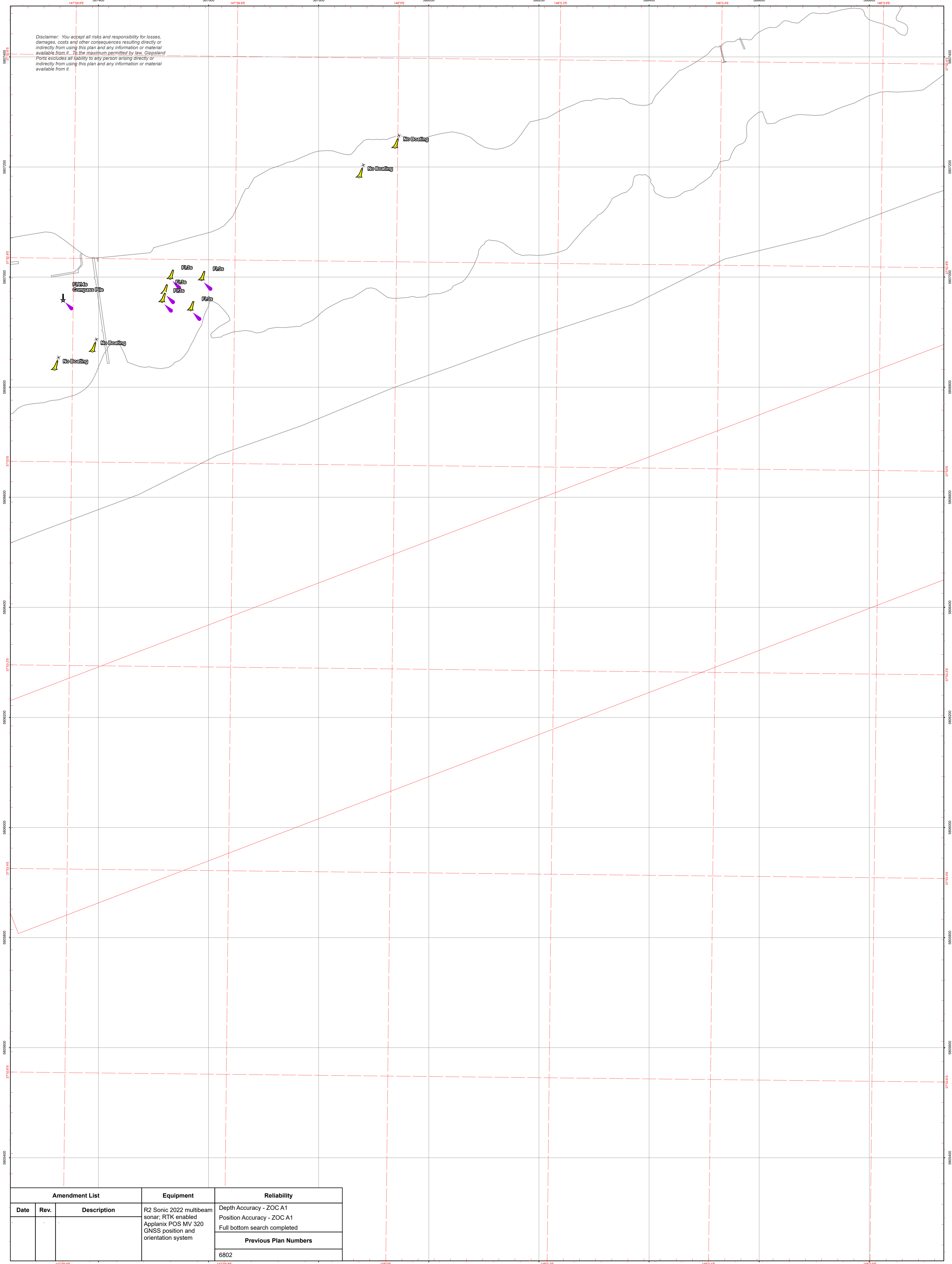
Gippsland Lakes

Lakes Entrance
Vicinity of The Entrance

6810

Sheet 1 of 1 **A1**

Disclaimer: You accept all risks and responsibility for losses, damages, costs and other consequences resulting directly or indirectly from using this plan and any information or material available from it. To the maximum permitted by law, Gippsland Ports excludes all liability to any person arising directly or indirectly from using this plan and any information or material available from it.



Amendment List			Equipment	Reliability
Date	Rev.	Description	R2 Sonic 2022 multibeam sonar; RTK enabled Applanix POS MV 320 GNSS position and orientation system	Depth Accuracy - ZOC A1 Position Accuracy - ZOC A1 Full bottom search completed
			Previous Plan Numbers	
			6802	

Datum Diagram	
AHD (m)	Chart Datum (m)
10.610	11.367
0.000	0.757
-0.757	-0.000

Scale 1:3,000 @ A1

0 50 100 200 300 metres

Notations Datum for soundings is Chart Datum, which is 0.757 metres below A.H.D. Co-ordinate system is GDA2020 (Red) and MGA2020, Zone 55 (Grey). Horizontal and Vertical positioning derived using RTK-GNSS. Contours are at 1m intervals. All values are in metres. Negative depths indicate drying heights.

Surveyed by	M.Spykers (BAppSc Surveying)
Date of Survey	5/08/2024
Compiled by	M.Spykers (BAppSc Surveying)
Checked by	S.Harman
Date Checked	5/08/2024

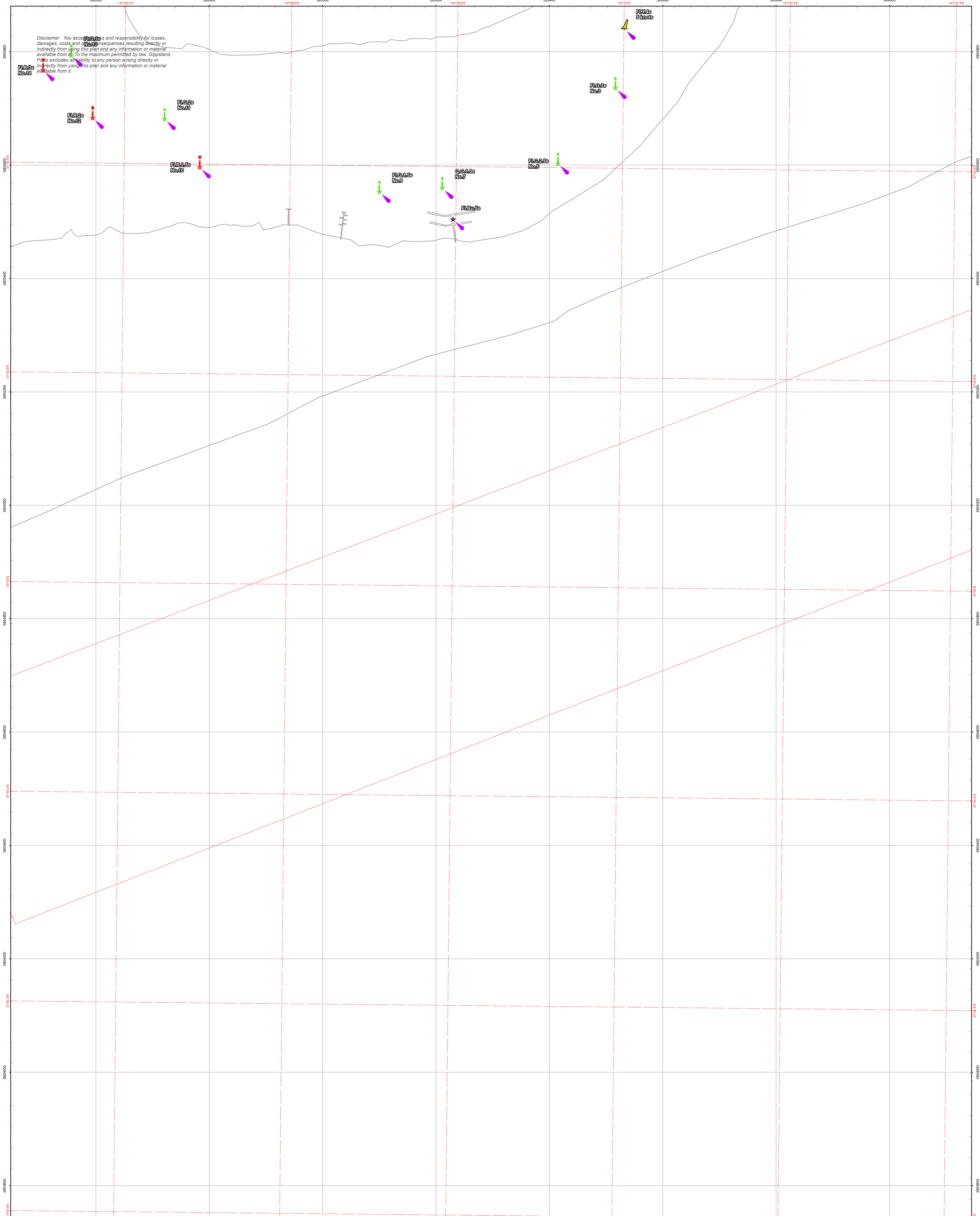


Gippsland Lakes

Lakes Entrance
Vicinity of The Entrance

6810

Sheet 1 of 1 **A1**



Amendment List			Equipment	Reliability
Date	Rev.	Description	R2 Sonic 2022 multibeam sonar; RTK enabled Applanix POS MV 320 GNSS position and orientation system	Depth Accuracy - ZOC A1 Position Accuracy - ZOC A1 Full bottom search completed
			Previous Plan Numbers	
			6802	

Datum Diagram	
AHD (m)	Chart Datum (m)
10.610	11.367
0.000	0.757
-0.757	0.000

Scale 1:3,000 @ A1

0 50 100 200 300 metres

Notations Datum for soundings is Chart Datum, which is 0.757 metres below A.H.D. Co-ordinate system is GDA2020 (Red) and MGA2020, Zone 55 (Grey). Horizontal and Vertical positioning derived using RTK-GNSS. Contours are at 1m intervals. All values are in metres. Negative depths indicate drying heights.

Surveyed by	M.Spykers (BAppSc Surveying)
Date of Survey	5/08/2024
Compiled by	M.Spykers (BAppSc Surveying)
Checked by	S.Harman
Date Checked	5/08/2024



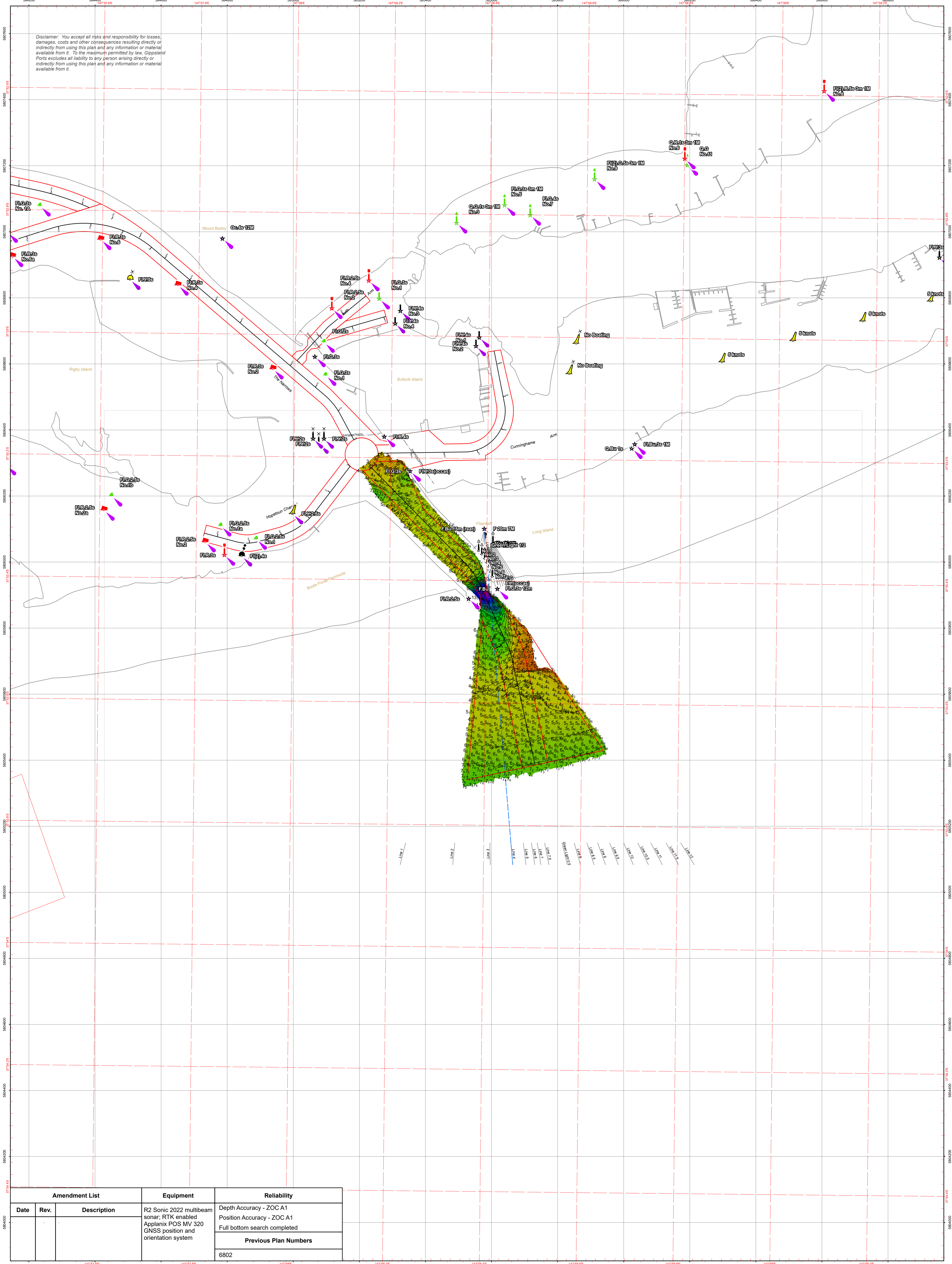
Gippsland Lakes

Lakes Entrance
Vicinity of The Entrance

6810

Sheet 1 of 1 **A1**

Disclaimer: You accept all risks and responsibility for losses, damages, costs and other consequences resulting directly or indirectly from using this plan and any information or material available from it. To the maximum permitted by law, Gippsland Ports excludes all liability to any person arising directly or indirectly from using this plan and any information or material available from it.



Amendment List			Equipment	Reliability
Date	Rev.	Description	R2 Sonic 2022 multibeam sonar; RTK enabled Applanix POS MV 320 GNSS position and orientation system	Depth Accuracy - ZOC A1 Position Accuracy - ZOC A1 Full bottom search completed
				Previous Plan Numbers
				6802

Datum Diagram	
AHD (m)	Chart Datum (m)
10.610	11.367
0.000	0.757
-0.757	0.000

Scale 1:5,000 @ A1

0 50 100 200 300 400 500 600 metres

Notations Datum for soundings is Chart Datum, which is 0.757 metres below A.H.D. Co-ordinate system is GDA2020 (Red) and MGA2020, Zone 55 (Grey). Horizontal and Vertical positioning derived using RTK-GNSS. Contours are at 1m intervals. All values are in metres. Negative depths indicate drying heights.

Surveyed by	M. Spyers (BAppSc Surveying)
Date of Survey	5/08/2024
Compiled by	M. Spyers (BAppSc Surveying)
Checked by	S. Harman
Date Checked	5/08/2024



Gippsland Lakes

Lakes Entrance

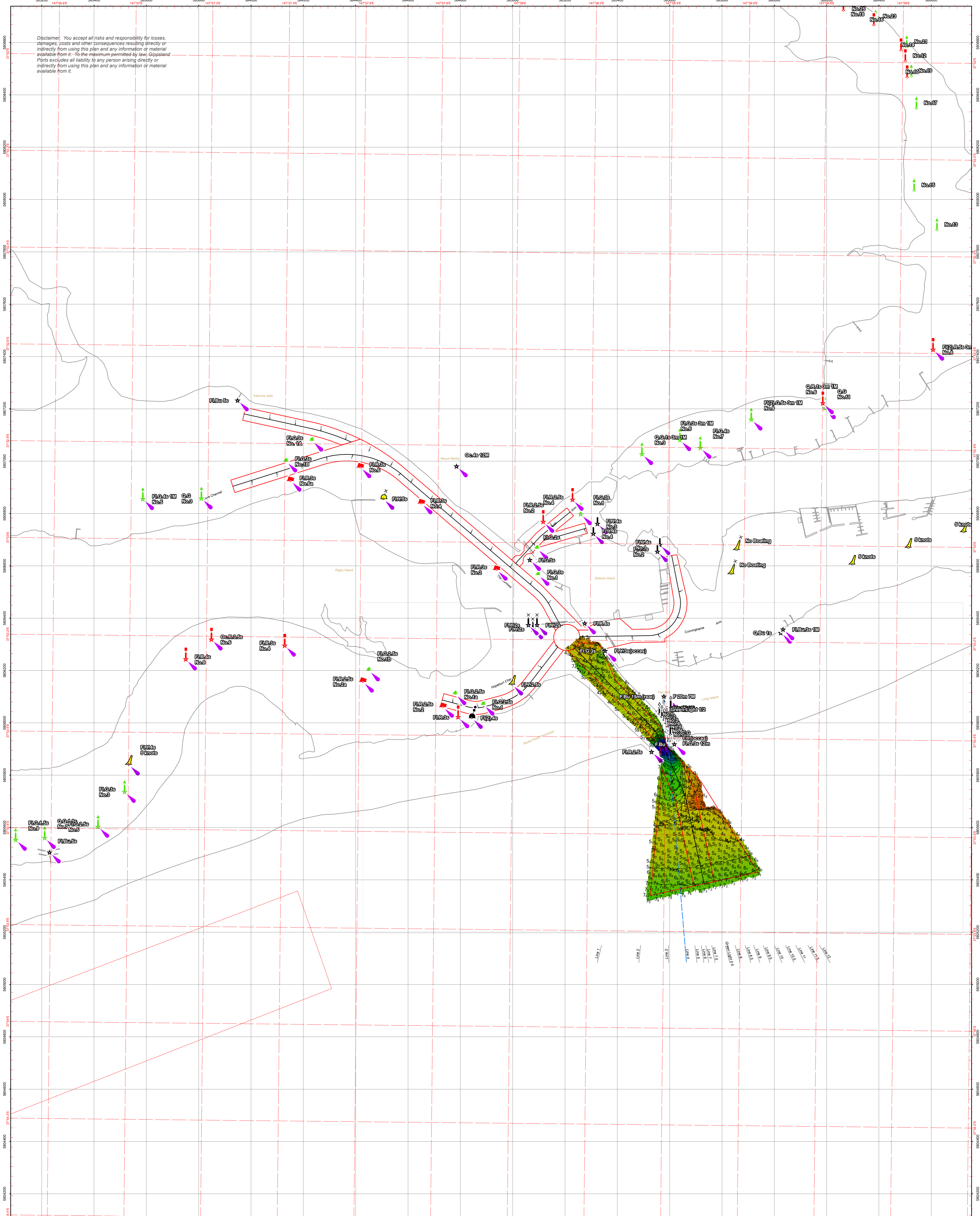
Vicinity of The Entrance

6810

Sheet 1 of 1

A1

Disclaimer: You accept all risks and responsibility for losses, damages, costs and other consequences resulting directly or indirectly from using this plan and any information or material available from it. To the maximum permitted by law, Gippsland Ports excludes all liability to any person arising directly or indirectly from using this plan and any information or material available from it.



Amendment List			Equipment	Reliability
Date	Rev.	Description	R2 Sonic 2022 multibeam sonar; RTK enabled Applanix POS MV 320 GNSS position and orientation system	Depth Accuracy - ZOC A1 Position Accuracy - ZOC A1 Full bottom search completed
				Previous Plan Numbers
				6802

Datum Diagram	
AHD (m)	Chart Datum (m)
10.610	11.367
0.000	0.757
-0.757	0.000

Scale 1:6,500 @ A1

0 50 100 200 300 400 500 600 700 metres

Notations Datum for soundings is Chart Datum, which is 0.757 metres below A.H.D. Co-ordinate system is GDA2020 (Red) and MGA2020, Zone 55 (Grey). Horizontal and Vertical positioning derived using RTK-GNSS. Contours are at 1m intervals. All values are in metres. Negative depths indicate drying heights.

Surveyed by	M.Spykers (BAppSc Surveying)
Date of Survey	5/08/2024
Compiled by	M.Spykers (BAppSc Surveying)
Checked by	S.Harman
Date Checked	5/08/2024



Gippsland Lakes

Lakes Entrance
Vicinity of The Entrance

6810

Sheet 1 of 1 **A1**