

Disclaimer: You accept all risks and responsibility for losses, damages, costs and other consequences resulting directly or indirectly from using this plan and any information or material available from it. To the maximum permitted by law, Gippsland Ports excludes all liability to any person arising directly or indirectly from using this plan and any information or material available from it.

Amendment List		
Date	Rev.	Description

Equipment
CeeEcho 200kHz 9 degree beam survey system with Trimble RTK-GNSS

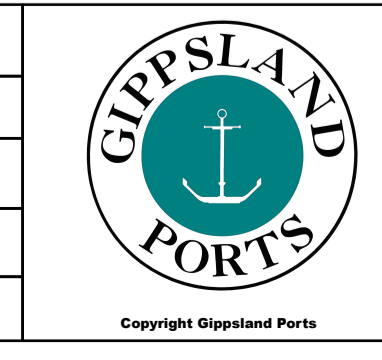
Reliability
Depth Accuracy - ZOC A1 Position Accuracy - ZOC A1 Full bottom search not completed
Previous Plan Numbers
N/A

Datum Diagram

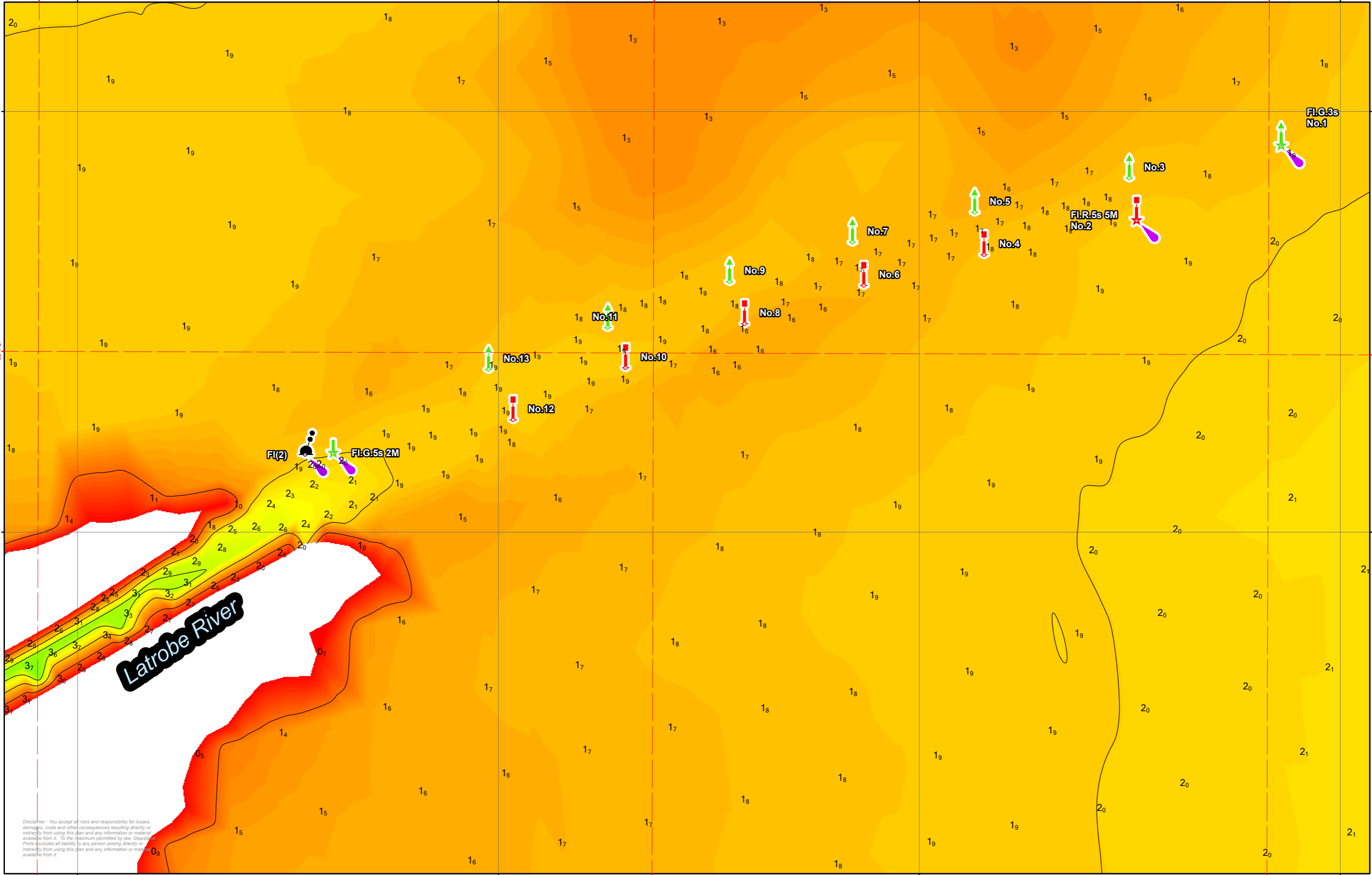
Scale 1:25,000 @ A1

Notations
Datum for soundings is Australian Height Datum (A.H.D).
Co-ordinate system is GDA2020 (Red) and MGA2020, Zone 55 (Grey).
Horizontal and Vertical positioning derived using PPK-GNSS.
Contours are at 1m intervals.
All values are in metres. Negative depths indicate drying heights.

Surveyed by	S. Harman, B. Spafford & M. Sypkers
Date of Survey	25/01/2024 - 06/09/2024
Compiled by	S. Harman
Checked by	M. Sypkers (BAppSc Surveying)
Date Checked	12/08/2024



Port of Gippsland Lakes	
Lake Wellington	
6813	<small>Sheet Size</small>
Sheet 1 of 1	A1



Disclaimer: You accept all risks and responsibility for losses, damages, costs and other consequences resulting directly or indirectly from using this plan and any information or material available from it. To the maximum permitted by law, Gippsland Ports excludes all liability to any person arising directly or indirectly from using this plan and any information or material available from it.

Amendment List		
Date	Rev.	Description

Equipment
CeeEcho 200kHz 9 degree beam survey system with Trimble RTK-GNSS

Reliability
Depth Accuracy - ZOC A1 Position Accuracy - ZOC A1 Full bottom search not completed
Previous Plan Numbers
N/A

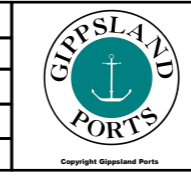
Datum Diagram

Scale 1:4,000 @ A3

0 50 100 metres

Notations
Datum for soundings is Australian Height Datum (A.H.D).
Co-ordinate system is GDA2020 (Red) and MGA2020, Zone 55 (Grey).
Horizontal and Vertical positioning derived using PPK-GNSS.
Contours are at 1m intervals.
All values are in metres. Negative depths indicate drying heights.

Surveyed by	S. Harman, B. Spafford & M. Sypkers
Date of Survey	25/01/2024 - 06/08/2024
Compiled by	S. Harman
Checked by	M.Spykers (BAppSc Surveying)
Date Checked	12/08/2024



Port of Gippsland Lakes	
Lake Wellington Latrobe River Approach	
6813	<small>Sheet Size</small> A3
Sheet 1 of 1	