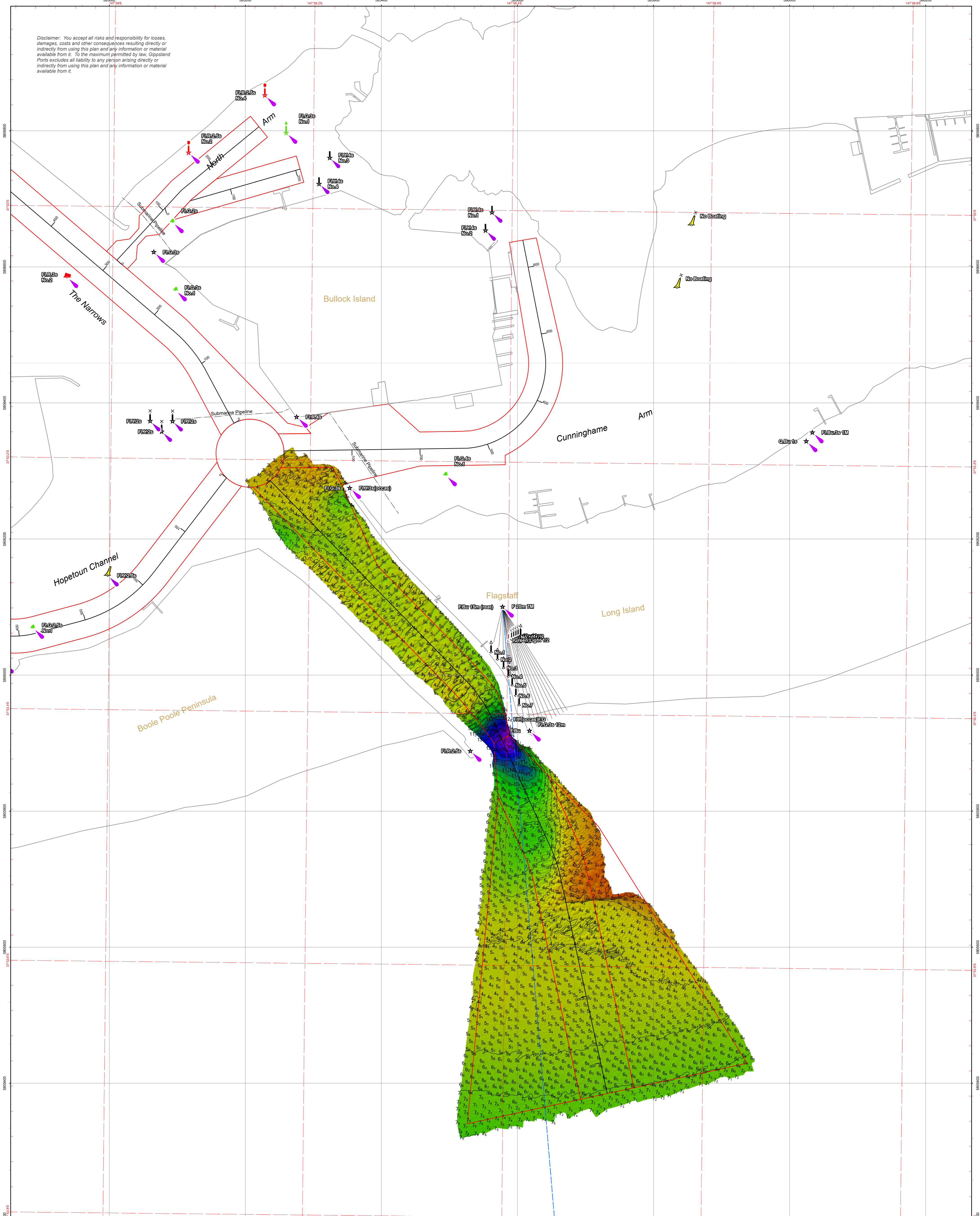


Disclaimer: You accept all risks and responsibility for losses, damages, costs and other consequences resulting directly or indirectly from using this plan and any information or material available from it. To the maximum permitted by law, Gippsland Ports excludes all liability to any person arising directly or indirectly from using this plan and any information or material available from it.



Amendment List			Equipment	Reliability
Date	Rev.	Description	R2 Sonic 2022 multibeam sonar; RTK enabled Applinix POS MV 320 GNSS position and orientation system	Depth Accuracy - ZOC A1 Position Accuracy - ZOC A1 Full bottom search completed
			Previous Plan Numbers	
			6802	

Datum Diagram	
AHD (m)	Chart Datum (m)
10.610	11.367
0.000	0.757
-0.757	-0.000

Scale 1:2,500 @ A1

0 50 100 200 300 metres

Notations Datum for soundings is Chart Datum, which is 0.757 metres below A.H.D. Co-ordinate system is GDA2020 (Red) and MGA2020, Zone 55 (Grey). Horizontal and Vertical positioning derived using RTK-GNSS. Contours are at 1m intervals. All values are in metres. Negative depths indicate drying heights.

Surveyed by	M.Spykers (BAppSc Surveying)
Date of Survey	5/08/2024
Compiled by	M.Spykers (BAppSc Surveying)
Checked by	S.Harman
Date Checked	5/08/2024



Gippsland Lakes

Lakes Entrance
Vicinity of The Entrance

6810

Sheet 1 of 1 **A1**