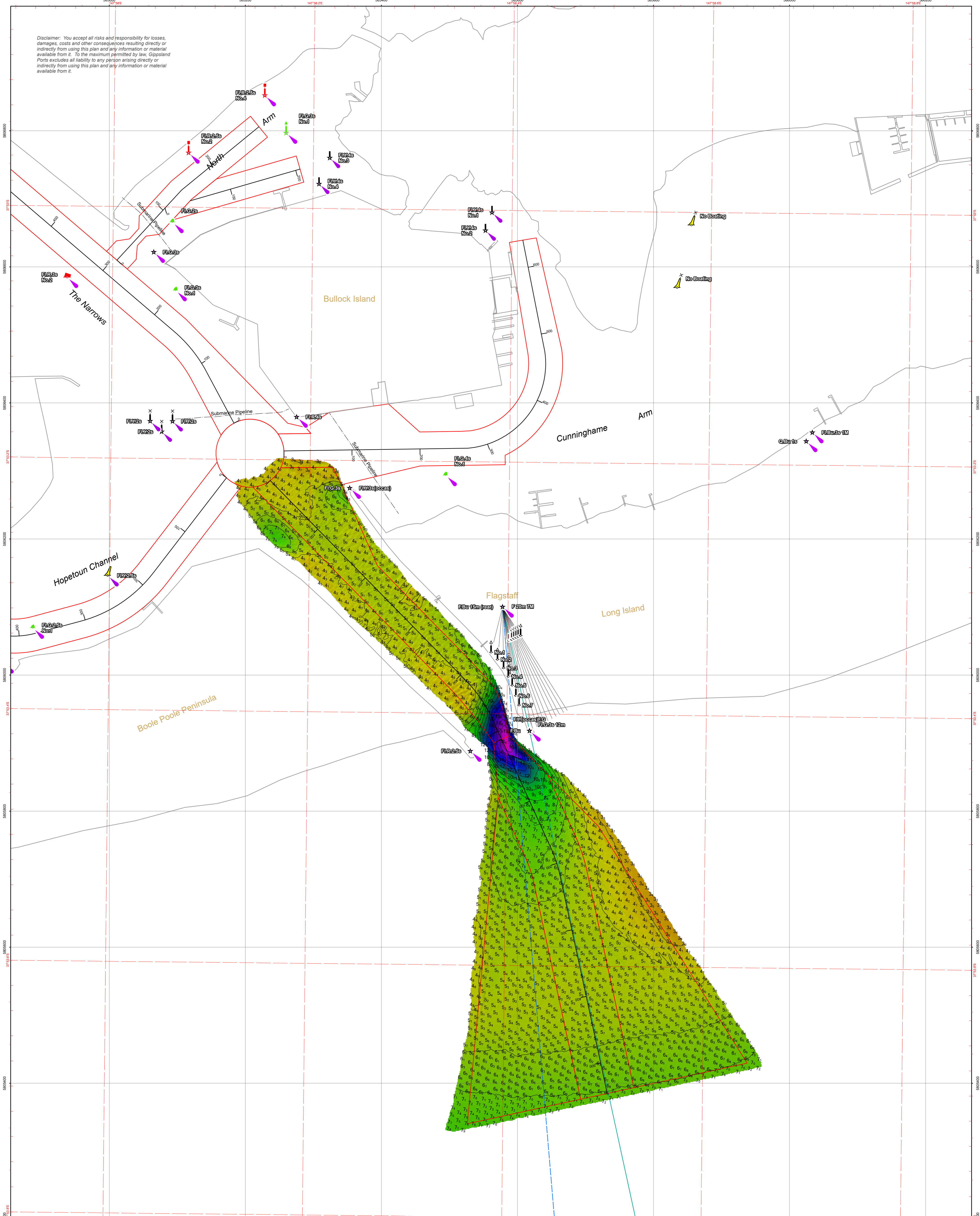


Disclaimer: You accept all risks and responsibility for losses, damages, costs and other consequences resulting directly or indirectly from using this plan and any information or material available from it. To the maximum permitted by law, Gippsland Ports excludes all liability to any person arising directly or indirectly from using this plan and any information or material available from it.



Amendment List			Equipment	Reliability
Date	Rev.	Description	R2 Sonic 2022 multibeam sonar; RTK enabled Applanix POS MV 320 GNSS position and orientation system	Depth Accuracy - ZOC A1 Position Accuracy - ZOC A1 Full bottom search completed
			Previous Plan Numbers	
			6820	

Datum Diagram	
AHD (m)	Chart Datum (m)
10.610	11.367
0.000	0.757
-0.757	-0.000

Scale 1:2,500 @ A1

0 50 100 200 300 metres

Notations Datum for soundings is Chart Datum, which is 0.757 metres below A.H.D. Co-ordinate system is GDA2020 (Red) and MGA2020, Zone 55 (Grey). Horizontal and Vertical positioning derived using RTK-GNSS. Contours are at 1m intervals. All values are in metres. Negative depths indicate drying heights.

Surveyed by	S. Harman
Date of Survey	01/10/2024
Compiled by	S. Harman
Checked by	M. Spyers (BAppSc Surveying)
Date Checked	01/10/2024



Gippsland Lakes

Lakes Entrance
Vicinity of The Entrance

6826

Sheet 1 of 1 **A1**