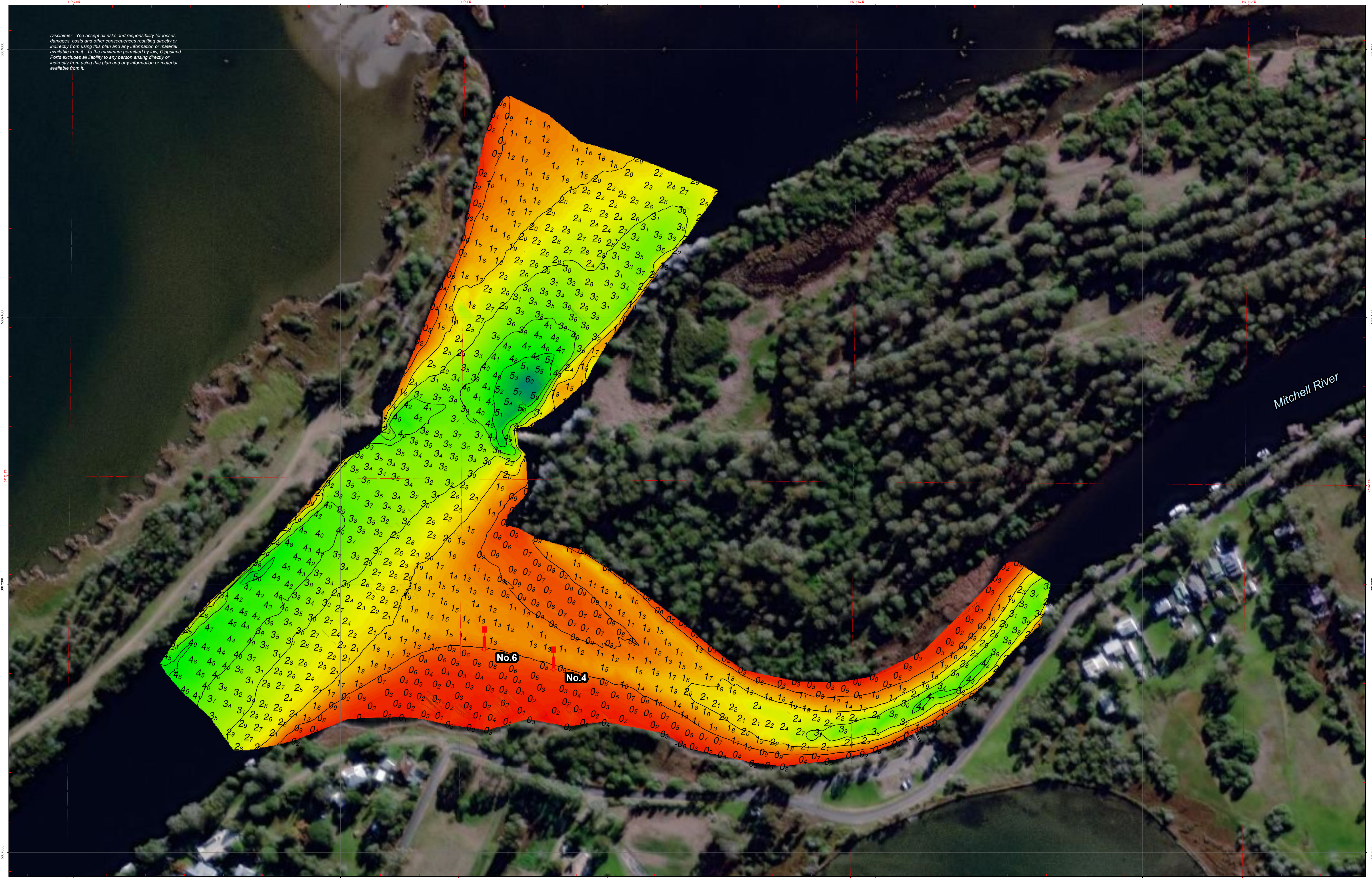


Disclaimer: You accept all risks and responsibility for losses, damages, costs and other consequences resulting directly or indirectly from using this plan and any information or material available from it. To the maximum permitted by law, Gippsland Ports excludes all liability to any person arising directly or indirectly from using this plan and any information or material available from it.



Amendment List			Equipment	Reliability	Datum Diagram
Date	Rev.	Description			
			CeeEcho 200kHz 9 degree beam survey system with Trimble RTK-GNSS	Depth Accuracy - ZOC A1 Position Accuracy - ZOC A1 Full bottom search not completed	
				Previous Plan Numbers	
				6061	

Scale 1:1,250 @ A1

Notations
Datum for soundings is the Australian Height Datum A.H.D.
Co-ordinate system is GDA2020 (Red) and MGA2020, Zone 55 (Grey).
Horizontal and Vertical positioning derived using RTK-GNSS.
Countours are at 1m intervals.
All values are in metres.Negative depths indicate drying heights.

Surveyed by	P.Hahnemann & B.Spafford
Date of Survey	2nd of August 2021
Compiled by	P.Hahnemann (BAppSc Surveying)
Checked by	B.Spafford Bachelor of Technology
Date Checked	4th of August 2021



Gippsland Lakes

**Mitchell River
Vicinity of the Cut**

6465

Sheet 1 of 1 A1