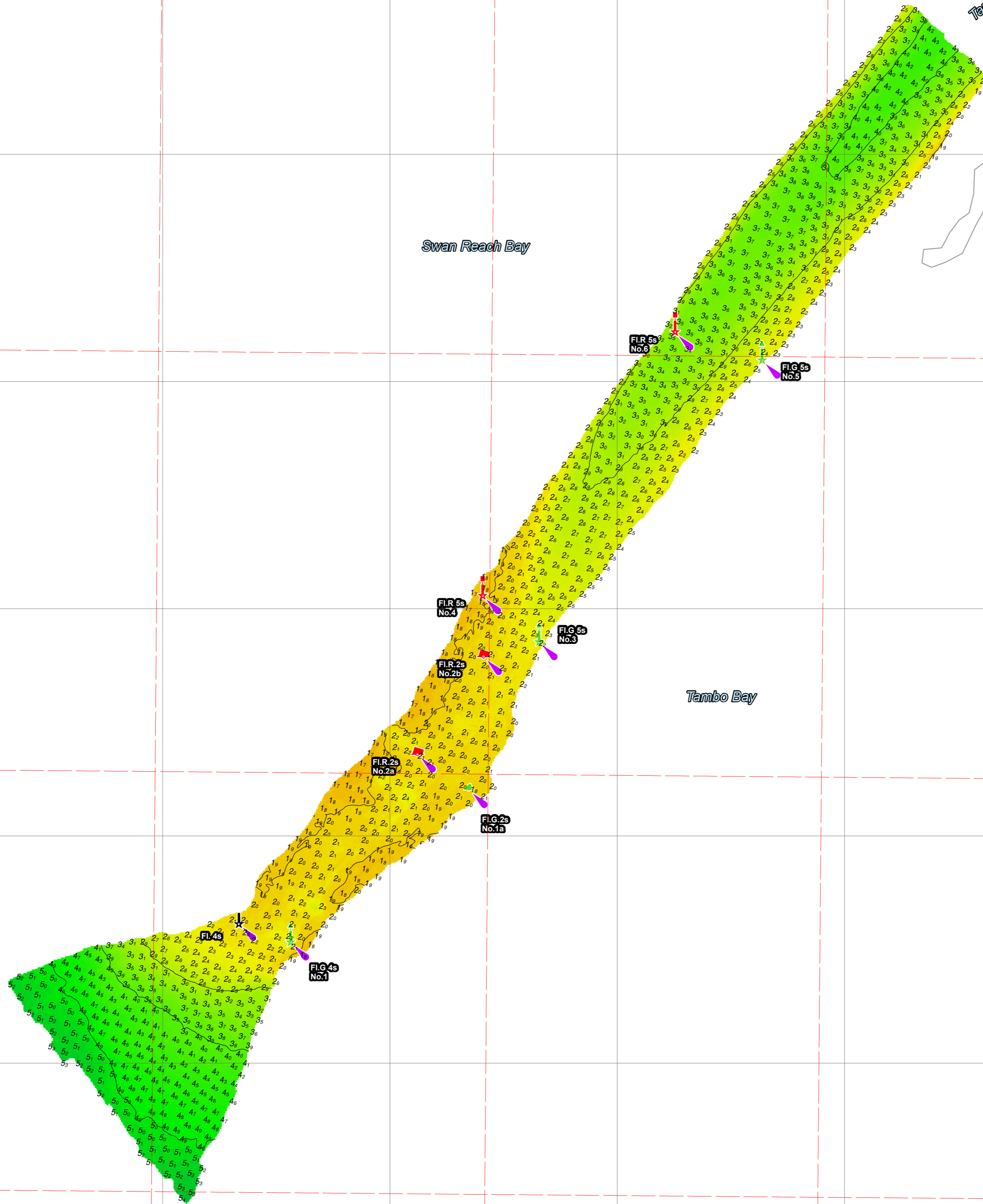


Disclaimer: You accept all risks and responsibility for losses, damages, costs and other consequences resulting directly or indirectly from using this plan and any information or material available from it. To the maximum permitted by law, Gippsland Ports excludes all liability to any person arising directly or indirectly from using this plan and any information or material available from it.



Amendment List			Equipment	Reliability
Date	Rev.	Description	R2 Sonic 2022 multibeam sonar; RTK enabled Applanix POS MV 320 GNSS position and orientation system	Depth Accuracy - ZOC A1 Position Accuracy - ZOC A1 Full bottom search completed
				Previous Plan Numbers
				6268

Datum Diagram	

Scale 1:2,500 @ A1

Notations
Datum for soundings is Australian Height Datum (A.H.D.).
Co-ordinate system is GDA2020 (Red) and MGA2020, Zone 55 (Grey).
Horizontal and Vertical positioning derived using PPK-GNSS.
Contours are at 1m intervals.
All values are in metres. Negative depths indicate drying heights.

Surveyed by	B.Spafford Bachelor of Technology
Date of Survey	25th of November 2020
Compiled by	B.Spafford Bachelor of Technology
Checked by	P.Hahneemann (BAppSc Surveying)
Date Checked	30th of November 2020



Gippsland Lakes

Lake King
Tambo River Approach

6377

Sheet 1 of 1 **A1**