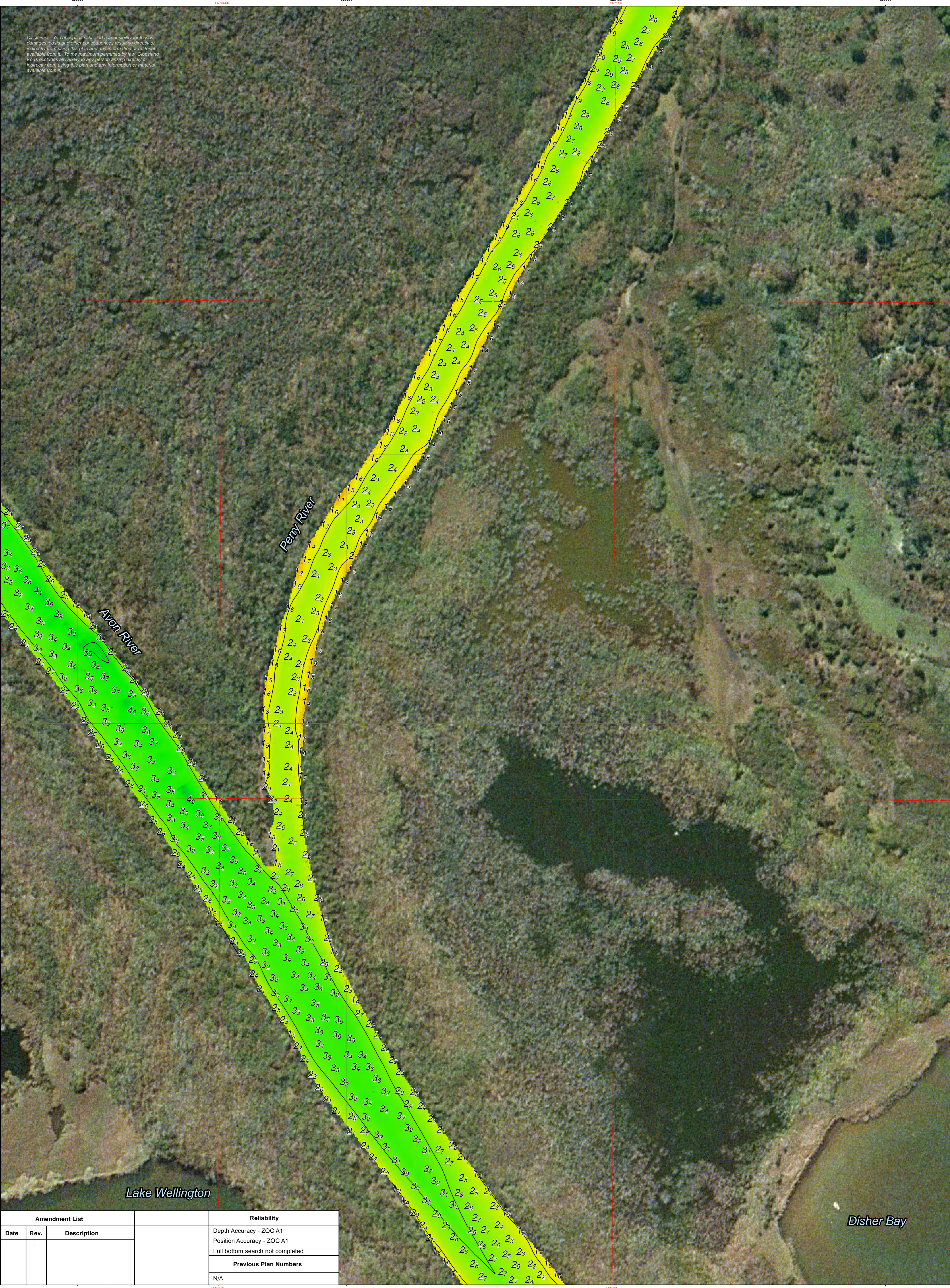



Disclaimer: You accept all risks and responsibility for losses, damages, costs and other consequences resulting directly or indirectly from using the plan and any information or material available from it. To the maximum permitted by law, Gippsland Ports excludes all liability to any person arising directly or indirectly from using this plan and any information or material available from it.



Amendment List			Reliability	
Date	Rev.	Description	Depth Accuracy - ZOC A1	Position Accuracy - ZOC A1
			Full bottom search not completed	
			Previous Plan Numbers	
			N/A	

Datum Diagram	Scale 1:1,250 @ A1	Surveyed	M.Spykers & P.Hahnemann		<b>Gippsland Lakes</b> <b>Perry River</b> <b>Avon River to Ch. 680m</b>	<b>6327</b> Sheet 1 of 5
	Notations Datum for soundings is Australian Height Datum (A.H.D.) Co-ordinate system is GDA94 (Red) and MGA94, Zone 55 (Grey). Tidal data derived using RTK-GNSS. Countours are at 1m intervals. All values are in metres. Negative depths indicate drying heights.	Date	24th June 2020			
		Compiled	P.Hahnemann (BAppSc Surveying)			
		Equipment	CeeEcho 200KHz 9 degree beam survey system with Trimble RTK-GNSS.			