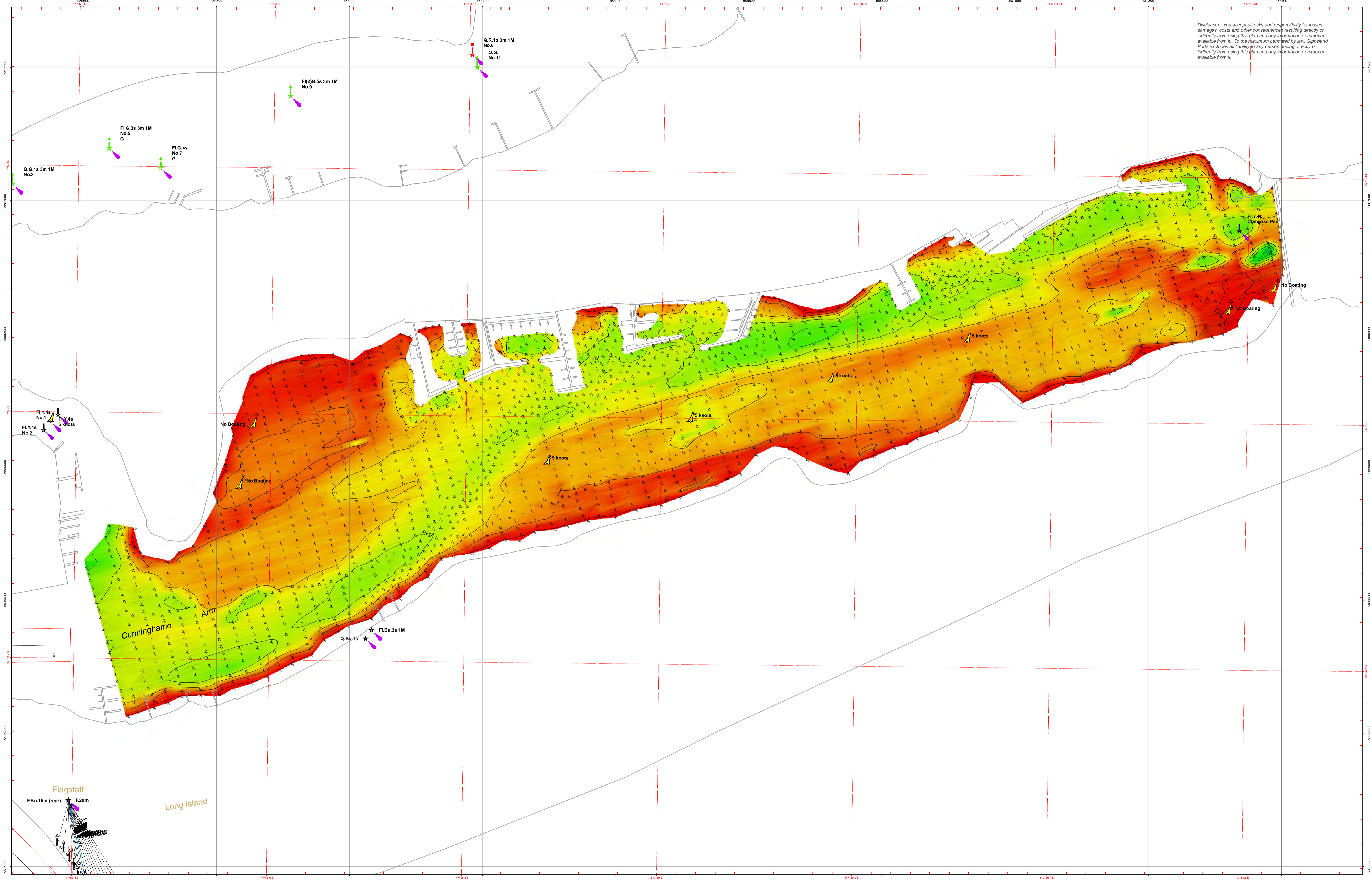


Disclaimer: You accept all risks and responsibility for losses, damages, costs and other consequences resulting directly or indirectly from using this plan and any information or material available from it. To the maximum permitted by law, Gippsland Ports excludes all liability to any person arising directly or indirectly from using this plan and any information or material available from it.



Date	Rev.	Description

Reliability	
Depth Accuracy - ZOC A1	Position Accuracy - ZOC A1
Full bottom search not completed	
Previous Plan Numbers	
5349	

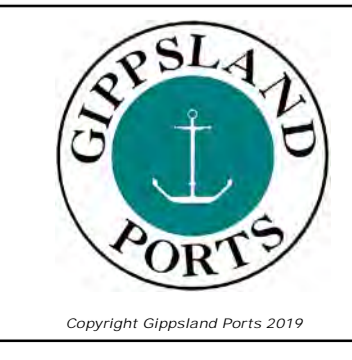
Datum Diagram	
AHD (m)	Chart Datum (m)
10.610	11.367
0.000	0.757
-0.757	0.000

**Scale 1:2,500 @ A1**

**Notations**

Datum for soundings is Chart Datum, which is 0.757 metres below A.H.D. Co-ordinate system is GDA94 (Red) and MGA94, Zone 55 (Grey). Tidal data derived using RTK-GNSS. Contours are at 1m intervals. All values are in metres. Negative depths indicate drying heights.

Surveyed	B.Spafford & M.Gilbert
Date	10th & 11th of January 2019
Compiled	B.Spafford Bachelor of Technology
Equipment	R2 Sonic 2022 multibeam RTK enabled Applinix POS MV 320 & CeeEcho 200 kHz 9 degree Single Beam Sonars, GNSS position and orientation system.



**Gippsland Lakes**

**Lakes Entrance  
Cunninghame Arm**

**6172**

Sheet 1 of 1 **A1**