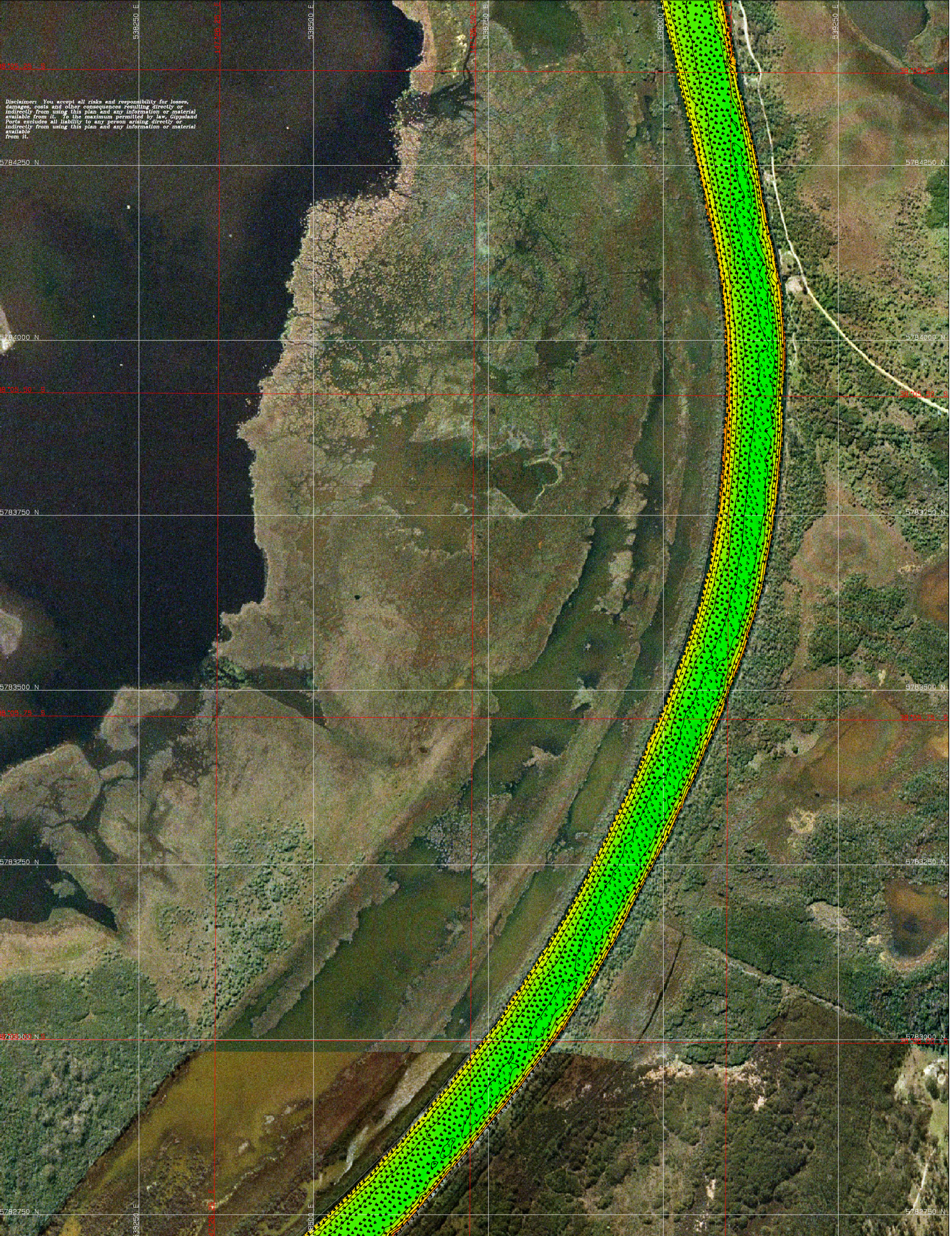
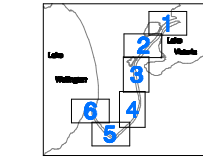


Disclaimer: You accept all risks and responsibility for losses, damages, costs and other consequences resulting directly or indirectly from using this plan and any information or material available from it. To the maximum permitted by law, Gippsland Ports excludes all liability to any person arising directly or indirectly from using this plan and any information or material available from it.



Reliability	Amendment List	
	Date	Ver Description
Depth Accuracy - IHO Special Order	-	-
Position Accuracy - IHO Special Order	-	-
Full bottom search	-	-
Previous Plan Numbers	-	-
N/A	-	-



SCALE 1 : 2500 @ A1

0 100 200 300

Notations
 Datum for soundings is Australian Height Datum (A.H.D.).
 Co-ordinate system is GDA 84 (Red) and MGA 84, Zone 55.
 Tidal data derived using RTK-GPS.
 All values are in metres. Contours are at 1m Intervals.

Surveyed	M.Spykers & B.Spafford
Date	21/11/2012, 16 & 22/01/2013
Compiled	M. Spykers BAppSc (Surveying)
Equipment	R2 Sonic 2022 multibeam sonar. RTK enabled Applanix POS MV 320 GNSS position and orientation system.



<h2>Gippsland Lakes</h2> <h3>McLennan Strait</h3> <p>4800m to 6800m</p>		<p>5705</p> <p>Sheet 4 of 6</p>
		<p>A1</p>