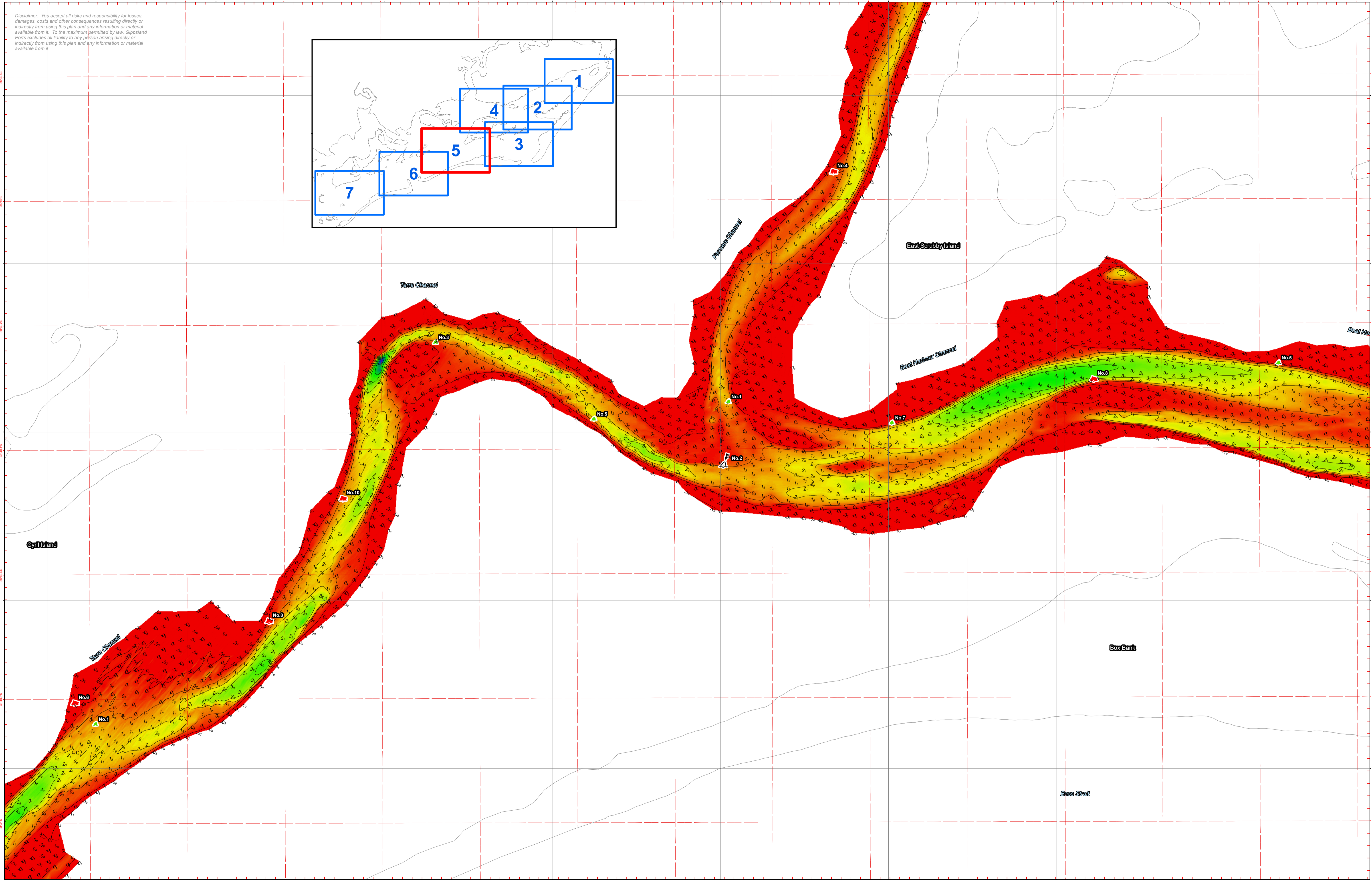
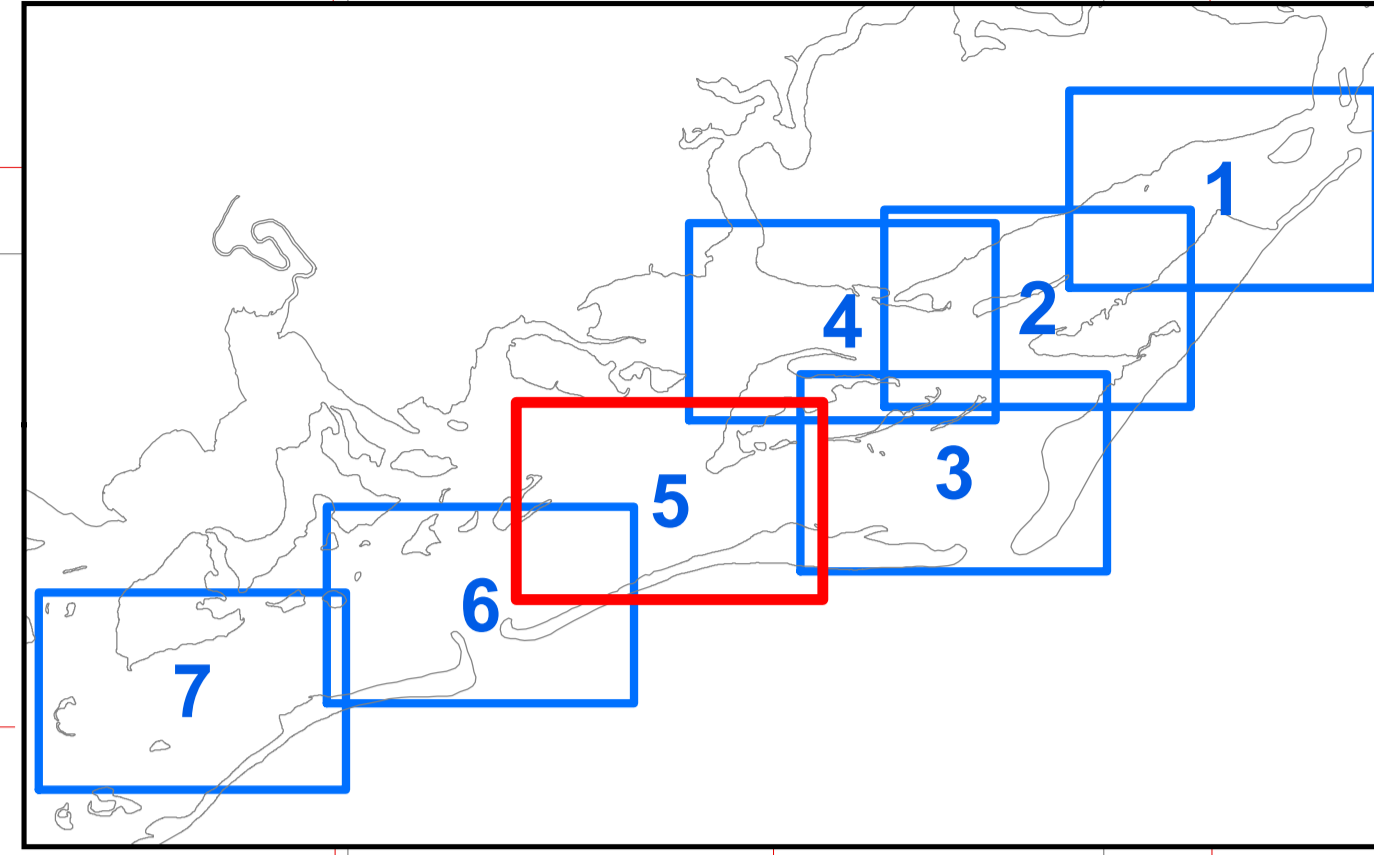


Disclaimer: You accept all risks and responsibility for losses, damages, costs and other consequences resulting directly or indirectly from using this plan and any information or material available from it. To the maximum permitted by law, Gippsland Ports excludes all liability to any person arising directly or indirectly from using this plan and any information or material available from it.



Amendment List		
Date	Rev.	Description

Notes:

Reliability
Depth Accuracy - ZOC A1
Position Accuracy - ZOC A1
Full bottom search not completed
<b>Previous Plan Numbers</b>
N/A

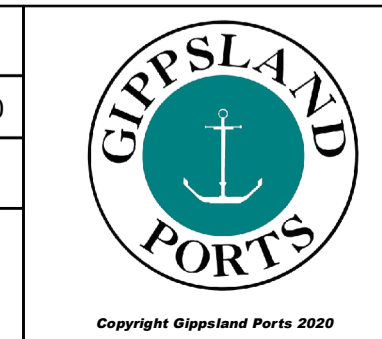
Datum Diagram	
AHD (m)	Chart Datum (m)
2.002	Wahroop PM 4.7 - 3.511
0.000	A.S.D. - 1.509
-1.509	Chart Datum - 0.000

Scale 1:5,000 @ A1

Notations

Datum for soundings is Chart Datum, which is 1.509 metres below A.H.D. Co-ordinate system is GDA94 (Red) and MGA94, Zone 55 (Grey). Tidal data derived using RTK-GNSS. Contours are at 1m intervals. All values are in metres. Negative depths indicate drying heights.

Surveyed	B. Spafford & P. Hahnemann
Date	11/12/2019; 08/13/14th Jan & 7th May 2020
Compiled	P. Hahnemann B.App.Sci.(Surv)
Equipment	CeeEcho 200KHz 9 Degree beam survey system with Trimble RTK-GNSS



**Corner Inlet & Port Albert**

**Farmer Channel / Boat Harbour West**

**Tarra No.1 to Boat Harbour No.6**

**6259**

Sheet 5 of 7 A1