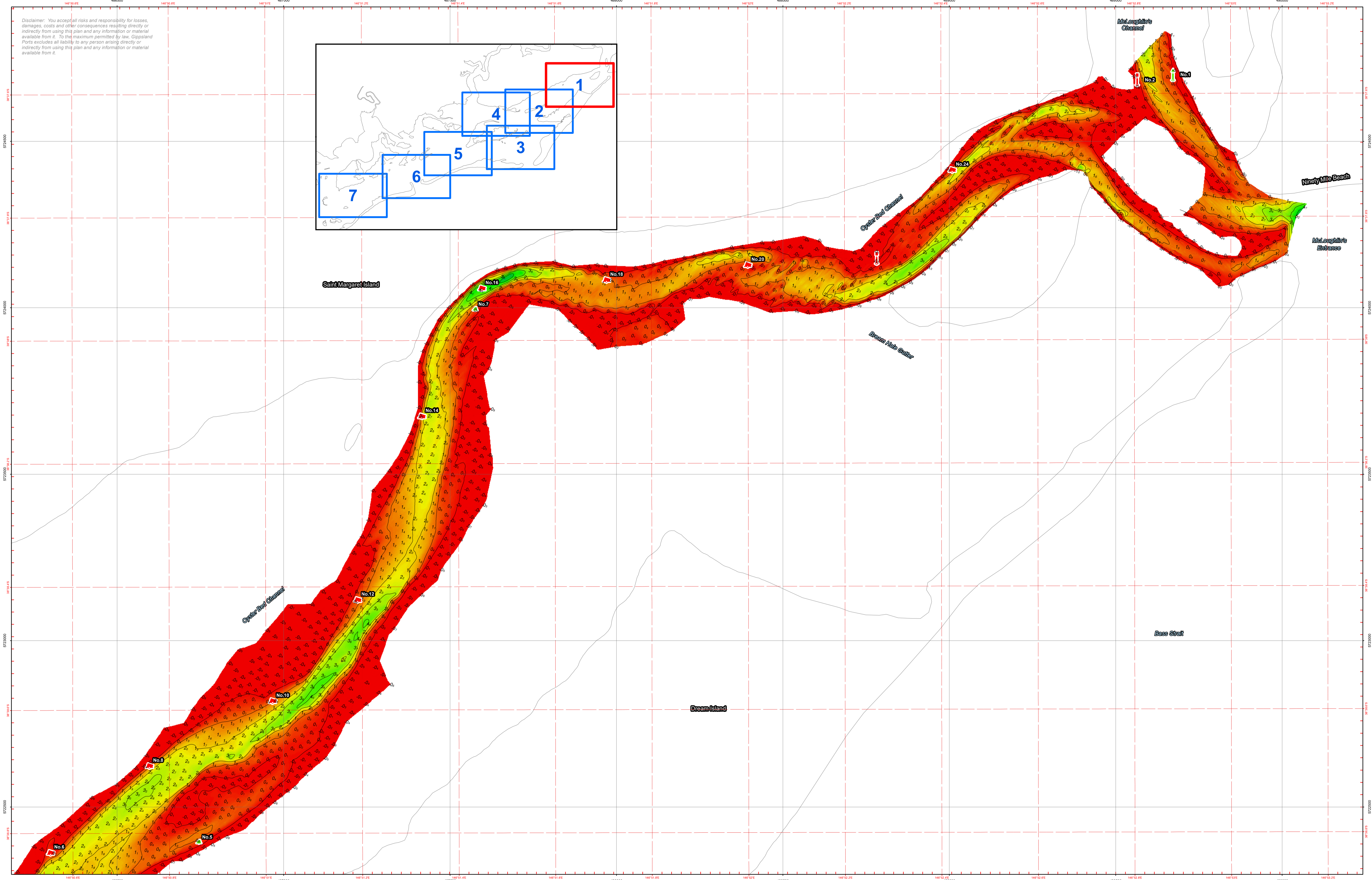
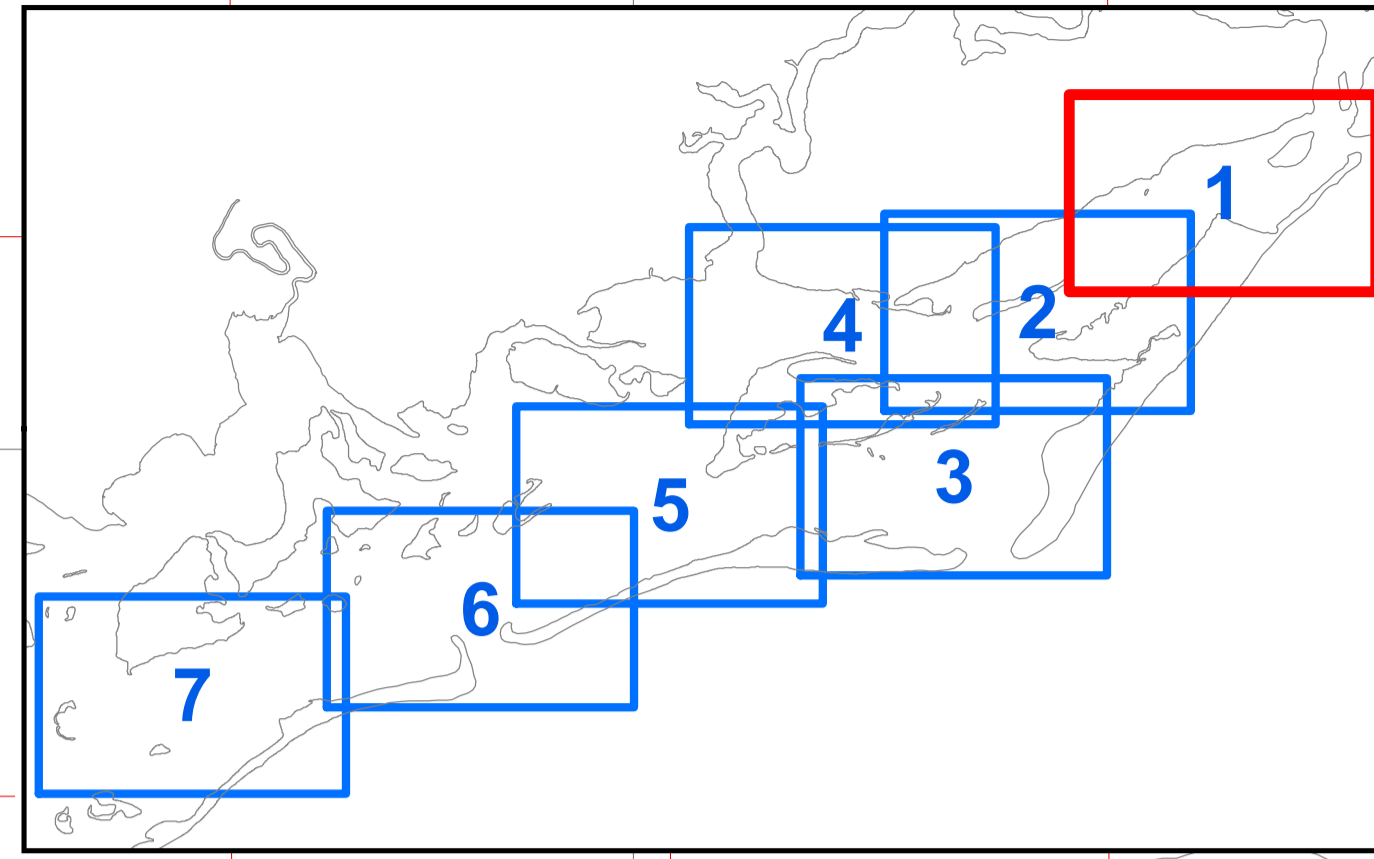


Disclaimer: You accept all risks and responsibility for losses, damages, costs and other consequences resulting directly or indirectly from using this plan and any information or material available from it. To the maximum permitted by law, Gippsland Ports excludes all liability to any person arising directly or indirectly from using this plan and any information or material available from it.



| Amendment List | | |
|----------------|------|-------------|
| Date | Rev. | Description |
| | | |

Notes:

| Reliability |
|----------------------------------|
| Depth Accuracy - ZOC A1 |
| Position Accuracy - ZOC A1 |
| Full bottom search not completed |
| Previous Plan Numbers |
| N/A |

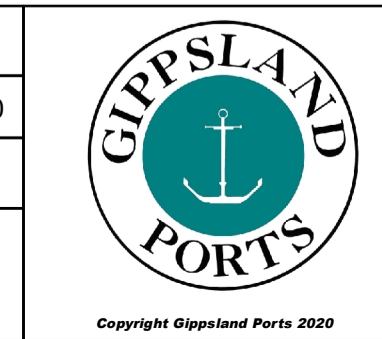
| Datum Diagram | |
|---------------|-----------------------|
| AHD (m) | Chart Datum (m) |
| 2.002 | Wahroop PM 47 - 3.511 |
| 0.000 | A.M.D. - 1.509 |
| -1.509 | Chart Datum - 0.000 |

Scale 1:5,000 @ A1

Notations

Datum for soundings is Chart Datum, which is 1.509 metres below A.H.D. Co-ordinate system is GDA94 (Red) and MGA94, Zone 55 (Grey). Tidal data derived using RTK-GNSS. Contours are at 1m intervals. All values are in metres. Negative depths indicate drying heights.

| | |
|-----------|------------------------------------------------------------------|
| Surveyed | B. Spafford & P. Hahnemann |
| Date | 11/12/2019; 08/13/14th Jan & 7th May 2020 |
| Compiled | P. Hahnemann B.App.Sci.(Surv) |
| Equipment | CeeEcho 200kHz 9 Degree beam survey system with Trimble RTK-GNSS |



Corner Inlet & Port Albert

Oyster Bed Channel - East

Buoy No.5 to McLoughlin's Channel

6259

Sheet 1 of 7 A1