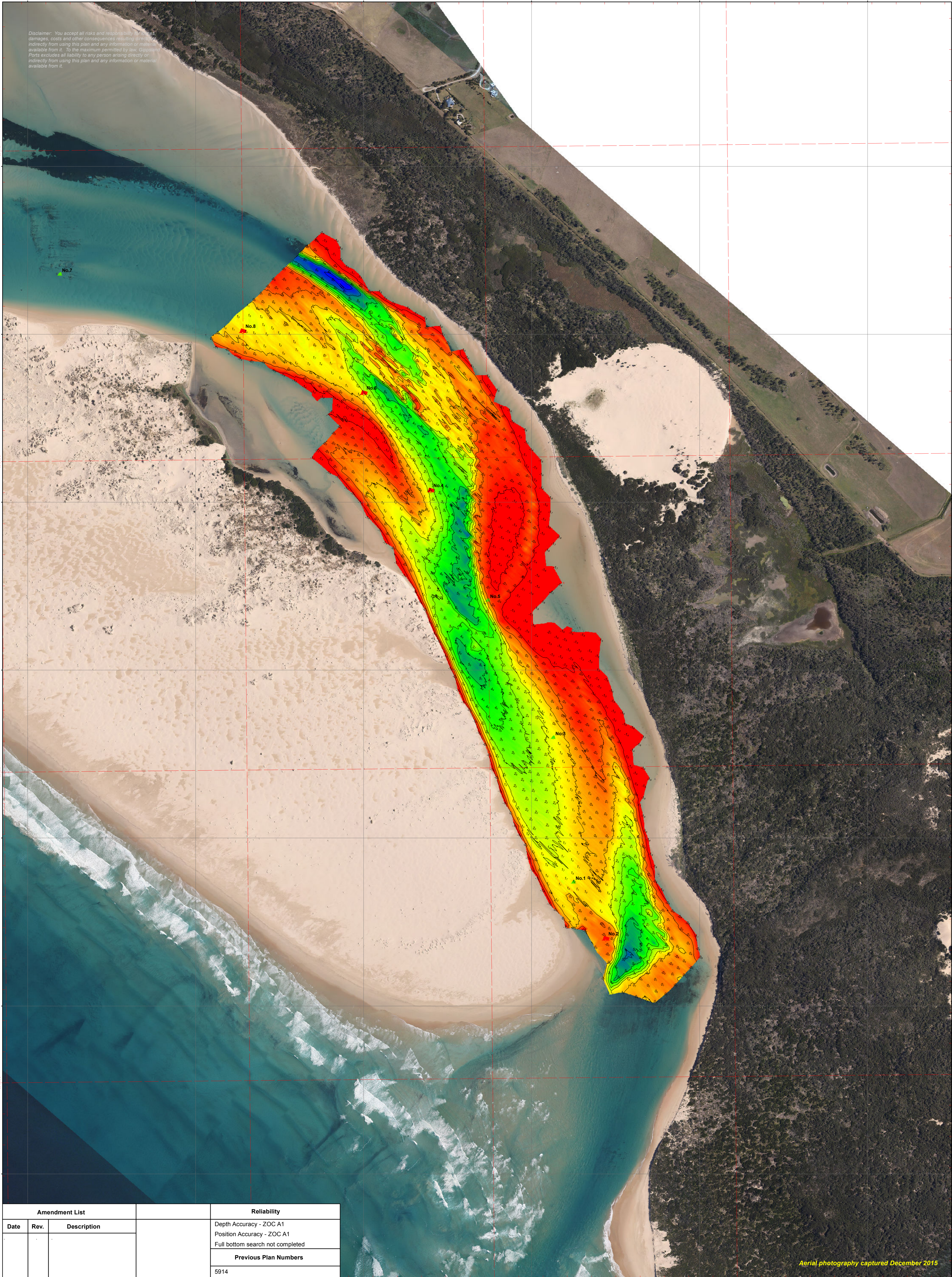


Disclaimer: You accept all risks and responsibility, including damages, costs and other consequences resulting directly or indirectly from using this plan and any information or material available from it, to the maximum permitted by law. Gippsland Ports excludes all liability to any person arising directly or indirectly from using this plan and any information or material available from it.



Aerial photography captured December 2015

Amendment List			Reliability	
Date	Rev.	Description		
			Depth Accuracy - ZOC A1	
			Position Accuracy - ZOC A1	
			Full bottom search not completed	
			Previous Plan Numbers	
			5914	

Datum Diagram	
AHD (m)	Chart Datum (m)
11.295	12.795
0.000	1.500
-1.500	0.000

Scale 1:5,000 @ A1

**Notations**

Datum for soundings is Chart Datum, which is 1.500 metres below A.H.D.  
 Co-ordinate system is GDA94 (Red) and MGA94, Zone 55 (Grey).  
 Tidal data derived using RTK-GNSS. Countours are at 1m intervals.  
 All values are in metres. Negative depths indicate drying heights.

<b>Surveyed</b>	M.Spykers & B.Spafford
<b>Date</b>	12th January 2017
<b>Compiled</b>	M.Spykers (BAppSc Surveying)
<b>Equipment</b>	CeeEcho 200KHz 9 degree beam survey system with Trimble RTK-GNSS.



<b>Shallow Inlet</b>		<b>6015</b>	Sheet Size <b>A1</b>
<b>Between No.2 and No.8</b>			
		Sheet 1 of 1	