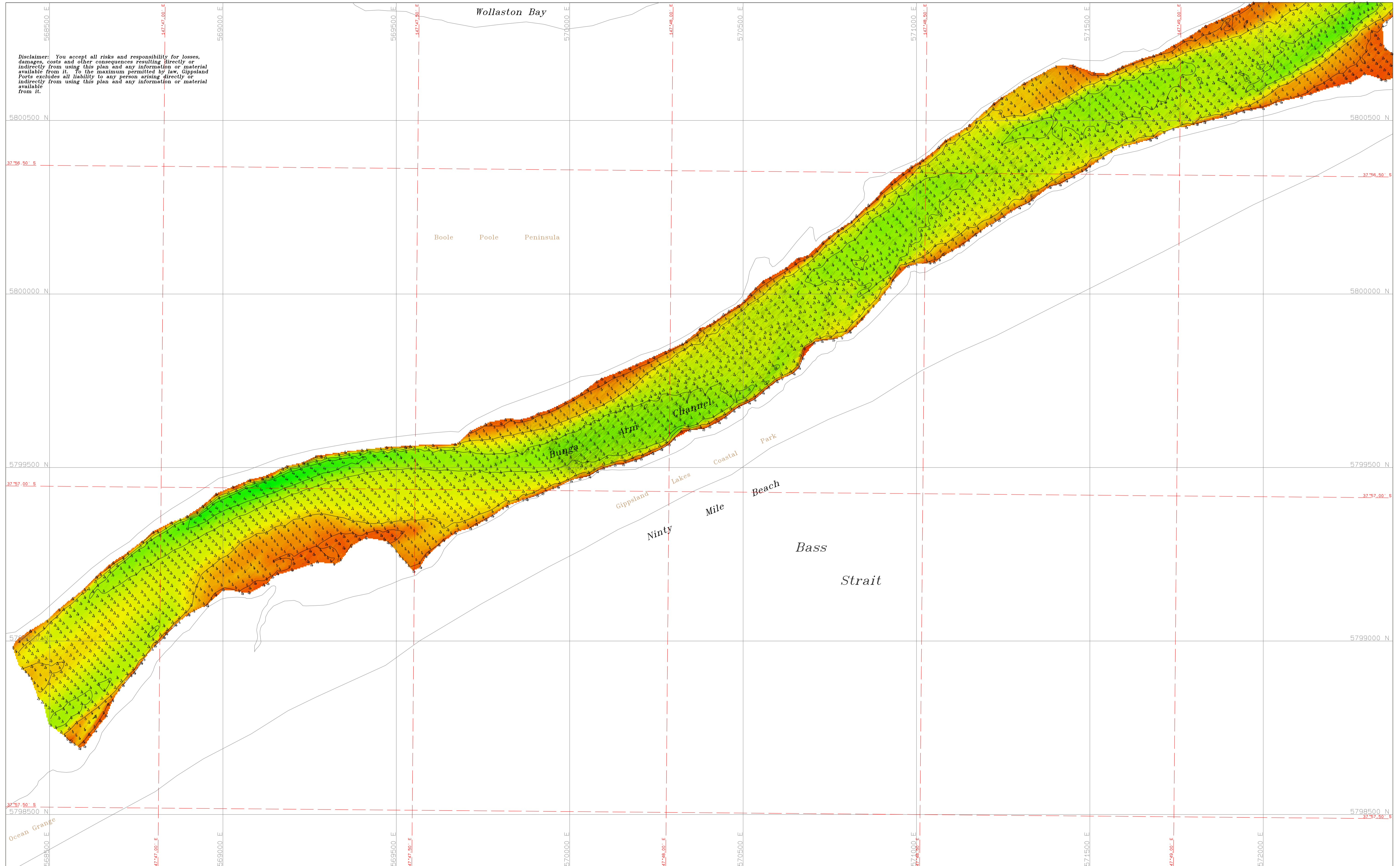


**Disclaimer:** You accept all risks and responsibility for losses, damages, costs and other consequences resulting directly or indirectly from using this plan and any information or material available from it. To the maximum permitted by law, Gippsland Ports excludes all liability to any person arising directly or indirectly from using this plan and any information or material available from it.



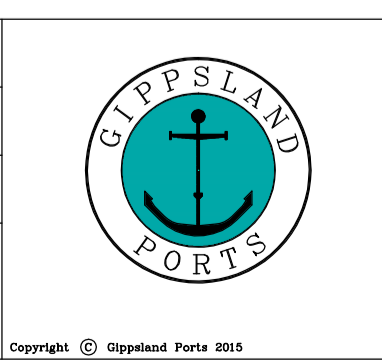
Amendment List	
Date	Rev Description

Reliability
Depth Accuracy - ZOC A1
Position Accuracy - ZOC A1
Not full bottom search
Previous Plan Numbers

SCALE 1 : 5000 @ A1

Notations  
 Datum for soundings is Australian Height Datum A.H.D.  
 Co-ordinate system is GDA94 (Red) and MGA 94, Zone 55 (Grey).  
 Tidal data derived using RTK-GNSS. All values are in metres.  
 Negative depths indicate drying heights. Contours are at 1m intervals.

Surveyed	B.Spafford & M.Gilbert
Date	12/02/2014, 30/06/2015 & 03/07/2015
Compiled	B.Spafford Bachelor of Technology
Equipment	CeeEcho 200kHz 9' beam survey system with Trimble RTK-GNSS.



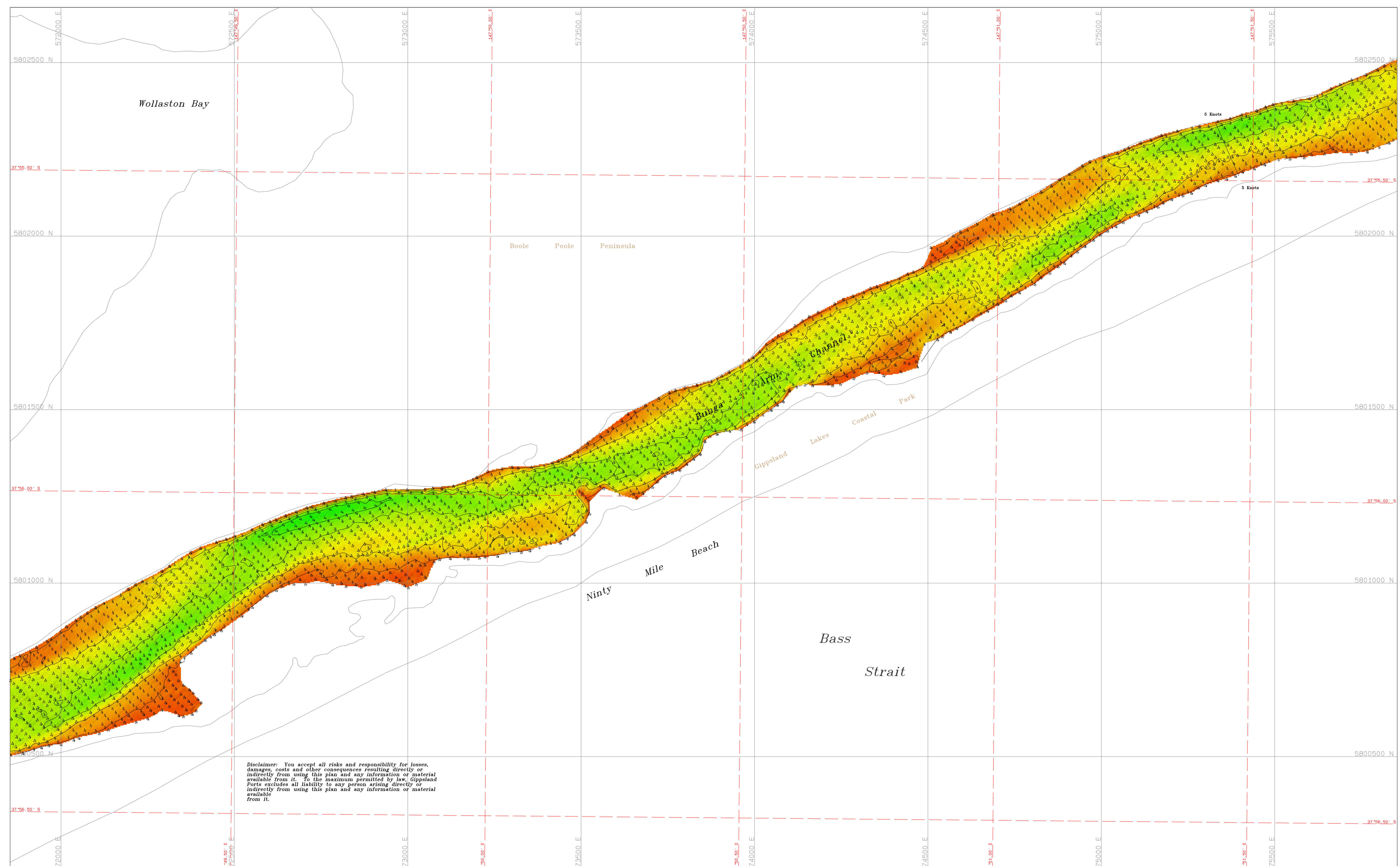
**Gippsland Lakes**

**Bunga Arm Channel**

5902

Sheet 1 of 3 **A1**





*Disclaimer: You accept all risks and responsibility for losses, damages, costs and other consequences resulting directly or indirectly from using this plan and any information or material available from it. To the maximum permitted by law, Gippsland Ports excludes all liability to any person arising directly or indirectly from using this plan and any information or material available from it.*

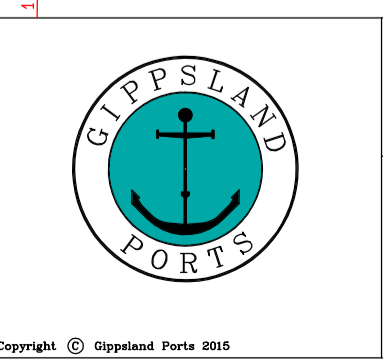
Amendment List		
Date	Rev	Description

Reliability
Depth Accuracy - ZOC A1
Position Accuracy - ZOC A1
Not full bottom search
Previous Plan Numbers

SCALE 1 : 5000 @ A1

Notations  
 Datum for soundings is Australian Height Datum A.H.D.  
 Co-ordinate system is GDA94 (Red) and MGA 94, Zone 55 (Grey).  
 Tidal data derived using RTK-GNSS. All values are in metres.  
 Negative depths indicate drying heights. Contours are at 1m intervals.

Surveyed	B.Spafford & M.Gilbert
Date	12/02/2014, 30/06/2015 & 03/07/2015
Compiled	B.Spafford Bachelor of Technology
Equipment	CeeEcho 200kHz 9' beam survey system with Trimble RTK-GNSS.



**Gippsland Lakes**

**Bunga Arm Channel**

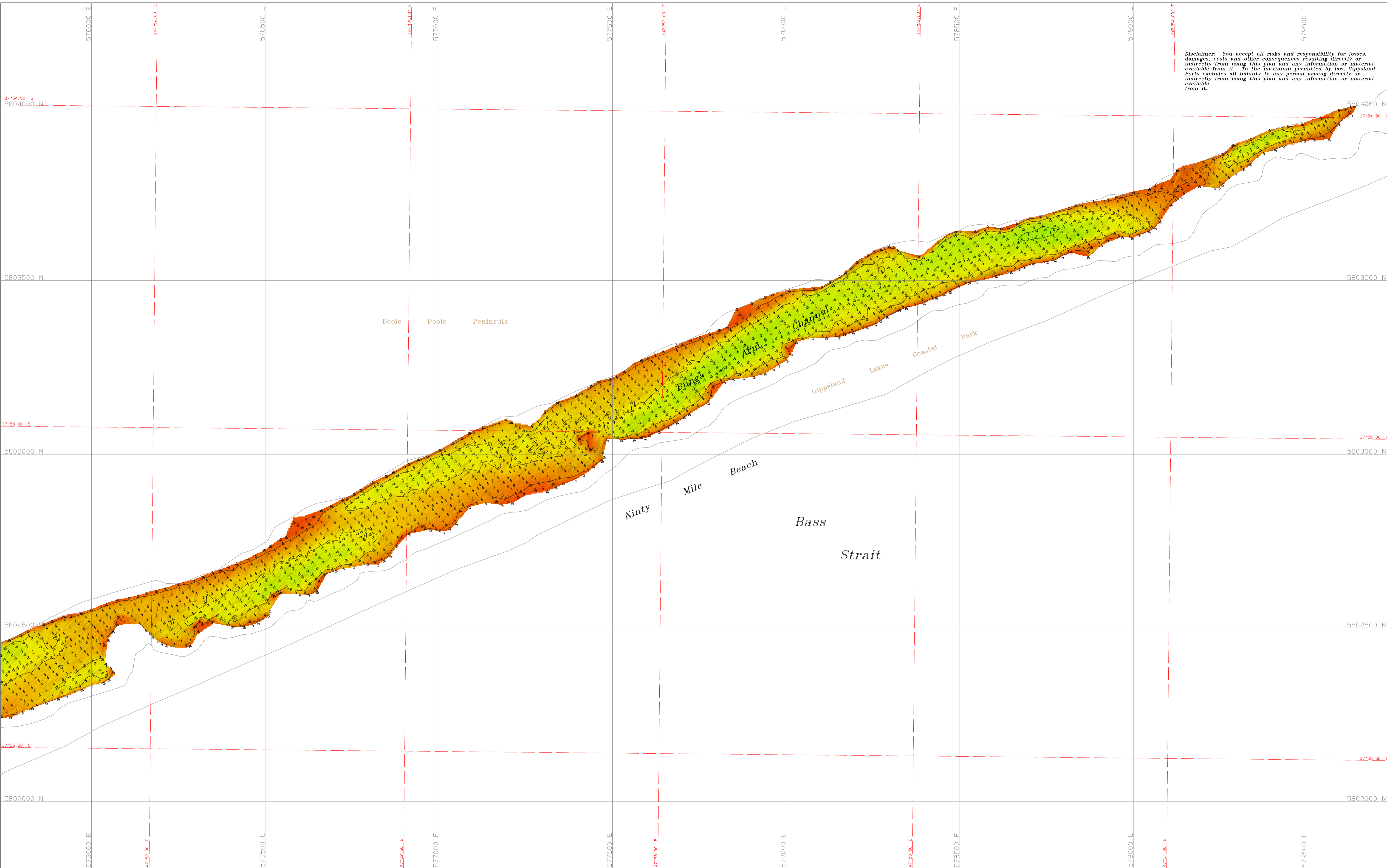
5902

Sheet 2 of 3

A1

Copyright © Gippsland Ports 2015





**Disclaimer:** You accept all risks and responsibility for losses, damages, costs and other consequences resulting directly or indirectly from using this plan and any information or material available from it. To the maximum permitted by law, Gippsland Ports excludes all liability to any person arising directly or indirectly from using this plan and any information or material available from it.

Amendment List		
Date	Rev	Description

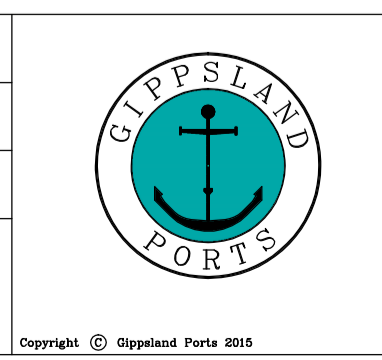
Reliability	
Depth Accuracy - ZOC A1	Position Accuracy - ZOC A1
Not full bottom search	
Previous Plan Numbers	

SCALE 1 : 5000 @ A1

**Notations**

Datum for soundings is Australian Height Datum A.H.D.  
 Co-ordinate system is GDA94 (Red) and MGA 94, Zone 55 (Grey).  
 Tidal data derived using RTK-GNSS. All values are in metres.  
 Negative depths indicate drying heights. Contours are at 1m intervals.

Surveyed	B.Spafford & M.Gilbert
Date	12/02/2014, 30/06/2015 & 03/07/2015
Compiled	B.Spafford Bachelor of Technology
Equipment	CeeEcho 200kHz 9' beam survey system with Trimble RTK-GNSS.



**Gippsland Lakes**

**Bunga Arm Channel**

5902

Sheet 3 of 3 A1