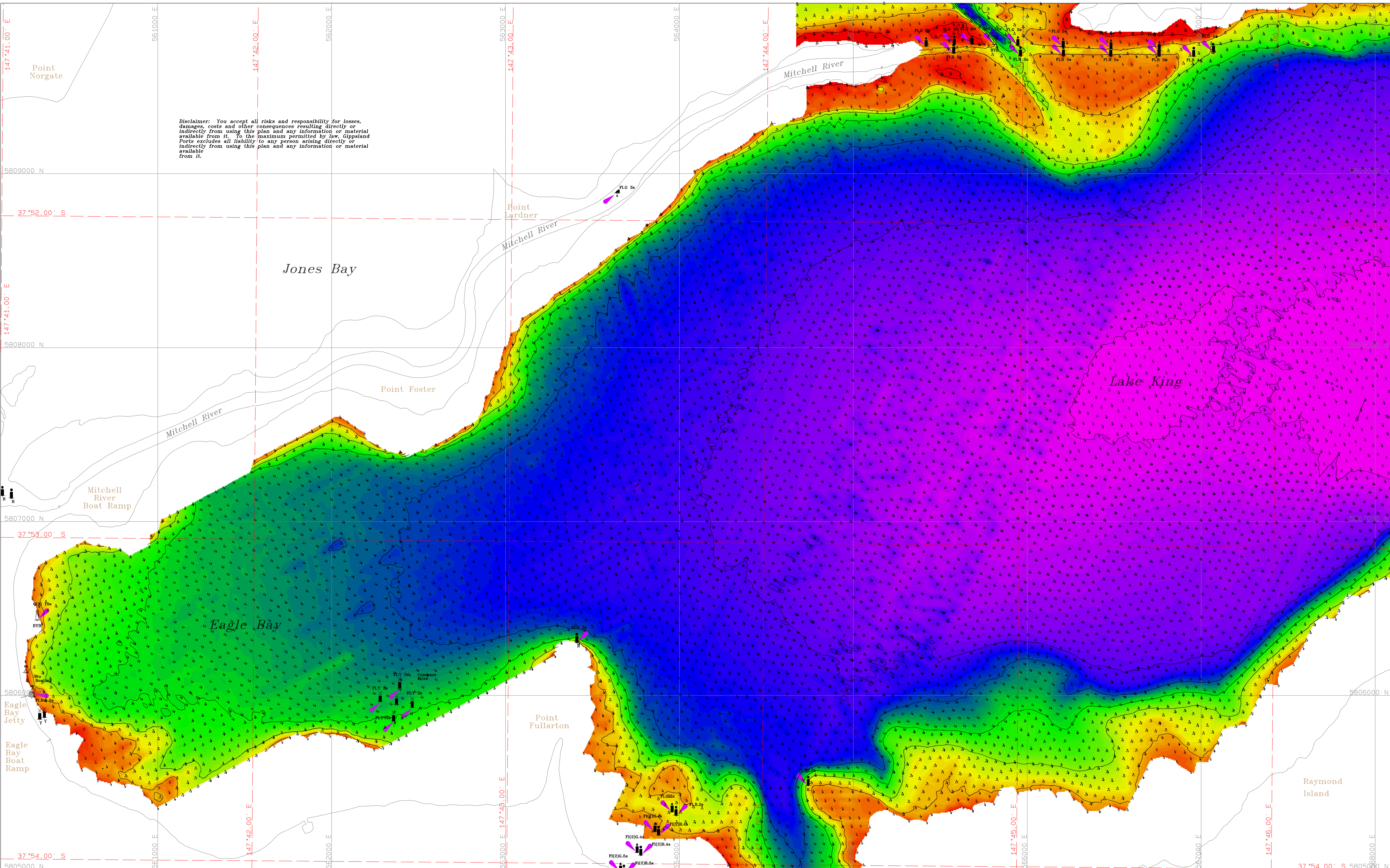


Disclaimer: You accept all risks and responsibility for losses, damages, costs and other consequences resulting directly or indirectly from using this plan and any information or material available from it. To the maximum permitted by law, Gippsland Ports excludes all liability to any person arising directly or indirectly from using this plan and any information or material available from it.



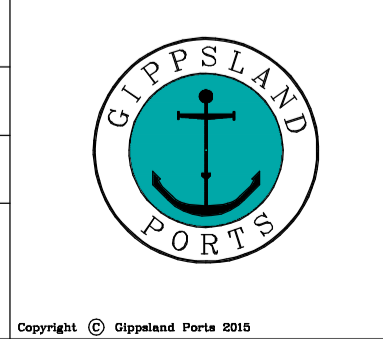
Amendment List		
Date	Rev	Description

Reliability	
Depth Accuracy - ZOC A1	
Position Accuracy - ZOC A1	
Not full bottom search	
Previous Plan Numbers	
N/A	

SCALE 1 : 10,000 @ A1

Notations
 Datum for soundings is Australian Height Datum (A.H.D.)
 Co-ordinate system is GDA94 (Red) and MGA 94, Zone 55 (Grey).
 Tidal data derived using RTK-GNSS.
 All values are in metres. Contours are at 1m intervals.

Surveyed	M.Spykers & B.Spafford
Date	(04/08/2014 to 08/07/2015)
Compiled	B.Spafford Bachelor of Technology
Equipment	Atlas Deso 350M with Applanix Pos MV320 & CeeEcho 200kHz y beam survey system with Trimble RTK-GNSS.



Gippsland Lakes	
Lake King	5903
Eagle Bay to Raymond Island	Sheet 1 of 1
A1	